

# 7.0 Quick Reference Guide

## V6.2 to V7.0 Menu Location Changes

Make sure that “Configure” is toggled on. (see below)

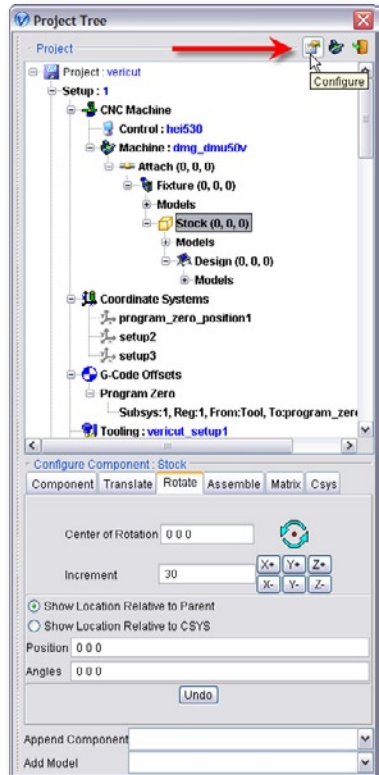
This guide is intended help VERICUT 6.2 users find the menus that they are already familiar with in the V7.0 user interface.

Please Note:

RMB = Right Mouse Button

PT = Project Tree

Config = Configure



| V6.2 Location                           | V7.0 Location   | V6.2 Location   | V7.0 Location  |
|---|---|---|--|
| <b>Project menu:</b>                    |   |   |  |
| CNC Machine                             | PT > Config CNC Machine menu  | Motion (Motion window)<br>Start At/Stop At features   | Removed<br>PT > Config Project menu: Start/Stop tab<br>RMB on "Play to End" VCR button in the VERICUT main window  |
| Setup Models > Define (Modeling window) | Removed   |   | PT > Config Setup menu: Motion tab<br>PT > Config Tooling menu   |
| Model tab                               | PT > Config Model menu: Model tab   | Motion features   |  |
| Position tab                            | Removed   | Tool features (all except Tool Display and Display Holders in Workpiece View)<br>Tool Display   | PT > RMB on Tooling branch: Translucent<br>PT > RMB on Tooling branch > Visibility > Blank<br>PT > RMB on Tooling branch: Blank Holders<br>Project menu > G-Code > Advanced Settings (G-Code Advanced Settings window)<br>Removed  |
| Translate tab                           | PT > Config Model menu: Translate tab   |   | File menu > Properties > Tolerance tab   |
| Rotate tab                              | PT > Config Model menu: Rotate tab  | Holders in Workpiece View   | Configuration menu > Machine Settings<br>PT > Config Setup menu: G-Code tab  |
| Assemble tab                            | PT > Config Model menu: Assemble tab  | G-Code > Settings (G-Code Settings window)  | Removed  |
| Matrix tab                              | PT > Config Model menu: Matrix tab  | Settings tab  | PT > Config G-Code Offsets menu<br>PT > Config G-Code Offset Table menu<br>PT > Config G-Code Offset Table Record menu<br>Project menu > G-Code > Advanced Settings: Overrides tab<br>Removed  |
| Csys tab                                | PT > Config Model menu: Csys tab  | Rotary Feed Motion Tol<br>Rotary Rapid Motion Tol<br>Floor/Wall Orient Up<br>All other features | PT > Config NC Subroutines menu: Add NC Subroutine Files<br>PT > RMB on NC subroutine file: Delete<br>PT > Config NC Subroutines menu: Add NC Subroutine Files<br>PT > RMB on NC subroutine file: Delete<br>PT > RMB on NC subroutines branch: Delete All<br>Project menu > APT Settings |
| Mirror tab                              | PT > Config Model menu: Mirror tab  | Tables tab<br>Job Tables  |  |
| Component Attributes tab                | PT > Config Component menu: Component tab<br>PT > Config Component menu: Accel/Decel tab  | Tool Tables<br>Subroutines tab<br>Add<br>Replace  |  |
| Import tab<br>IGES File                 | Removed<br>PT > Config Component menu: Add Model: Model File<br>PT > Config Model branch menu: Add Model: Model File<br>PT > Config Model menu: Add Model: Model File<br>In all cases select IGES Type (Profile or Surface) in file selection box | Delete<br>Delete All<br>APT Settings (APT Settings window)                                      |  |
| Tolerance                               | File menu > Properties > Tolerance tab: Model Tolerance   | Coordinate Systems  |  |
| Offset Surface features                 | Removed   | Define<br>New<br>CSYS from File<br>Create CSYS while Simulating<br>Delete                       | Removed<br>PT > Config Coordinate System menu (Coordinate Systems branch highlighted)  |
| Setup Models > Load Stocks              | Project menu > Stock > Load Stocks  | All other features  | PT > RMB on Coordinate System > Delete<br>PT > RMB on Coordinate System branch > Delete All<br>PT > Config Coordinate System menu (Coordinate System highlighted)  |
| Setup Models > Delete Detached Stock    | Project menu > Stock > Delete Detached Stock  | Set Active Coord. Sys.  | Project menu > Active Coordinate System  |
| Setup Models > Create Model File        | PT > Config Model menu: Model tab: Sketcher   |   |  |
| NC Programs (NC Program window)         | Removed   | <b>Configuration menu:</b>  |  |
| NC Program Type                         | PT > Config NC Programs menu  | Machine Settings: Tables tab<br>Component Tree  | Configuration menu > Machine Settings: Location tab<br>PT > Show Machine Components toggled "on"   |
| Tool Change By                          | PT > Config Tooling menu  |   |  |
| Use Selected Files                      | PT > RMB on NC program file: Active   |   |  |
| Initial Tool                            | PT > Config Tooling menu  |   |  |
| Tool Override                           | PT > Config Tooling menu  |   |  |
| NC Program list                         | PT > NC Programs branch   |   |  |
| List Order Buttons                      | PT: Drag/Drop NC program file   |   |  |
| Use                                     | PT > RMB on NC program file: Active   |   |  |
| NC Program                              | PT  |   |  |
| NC Program Origin                       | PT > RMB on NC program file: Assign CSYS  |   |  |
| Curve Fit                               | PT: Pick one or more NC program files   |   |  |
| Add                                     | PT > Config NC Programs menu: Add NC Program Files  |   |  |
| Replace                                 | PT > RMB on NC program file: Delete<br>PT > Config NC Programs menu: Add NC Program Files   |   |  |
| Delete                                  | PT > RMB on NC program file: Delete   |   |  |
| Curve Fit                               | PT > RMB on NC program file: Curve Fit  |   |  |
| Use Tool List                           | PT > Config Tooling menu: Optional Tool Assignment List   |   |  |
| Processing Options                      | Removed   |   |  |
| Activate                                | PT > Config Setup menu > Active<br>PT > RMB on Setup branch: Active   |   |  |



*CGTech® is the leader in CNC machine simulation, verification, and optimization software technology. Since 1988, our products have become the standard in manufacturing industry sectors including aerospace, automotive and ground transportation, mold and die, consumer products, power generation, and heavy industry. Today with offices throughout Europe and Asia, and a global network of resellers, CGTech software is used by companies of all sizes, universities, trade schools, and government agencies.*

*VERICUT customer support is provided by a team of dedicated technical support engineers. Full training, implementation, and contract consulting services are available.*

***When you invest in VERICUT, you're not just buying a software program, you're teaming up with a manufacturing partner with the best reputation in the business!***

Corporate Headquarters  
9000 Research Drive  
Irvine, California 92618  
TEL +1 (949) 753-1050  
FAX +1 (949) 753-1053  
[info@cgtech.com](mailto:info@cgtech.com)