

# Tag List

smar  
FIRST IN FIELDBUS

JUN / 05  
TAG LIST  
GENERATOR  
Version 8

USER'S MANUAL

## TAG LIST GENERATOR



TLSTDF65ME

# smar

**web: [www.smar.com](http://www.smar.com)**

**Specifications and information are subject to change without notice.  
For the latest updates, please visit the SMAR website above.**

## **BRAZIL**

**Smar Equipamentos Ind. Ltda.**  
Rua Dr. Antonio Furlan Jr., 1028  
Sertãozinho SP 14170-480  
Tel.: +55 16 3946-3510  
Fax: +55 16 3946-3554  
e-mail: insales@smar.com.br

## **GERMANY**

**Smar GmbH**  
Rheingaustrasse 9  
55545 Bad Kreuznach  
Germany  
Tel: + 49 671-794680  
Fax: + 49 671-7946829  
e-mail: infoservice@smar.de

## **USA**

**Smar International Corporation**  
6001 Stonington Street, Suite 100  
Houston, TX 77040  
Tel.: +1 713 849-2021  
Fax: +1 713 849-2022  
e-mail: sales@smar.com

## **CHINA**

**Smar China Corp.**  
3 Baishiqiao Road, Suite 30233  
Beijing 100873, P.R.C.  
Tel.: +86 10 6849-8643  
Fax: +86-10-6894-0898  
e-mail: info@smar.com.cn

## **MEXICO**

**Smar Mexico**  
Cerro de las Campanas #3 desp 119  
Col. San Andrés Atenco  
Tlalnepantla Edo. Del Méx - C.P. 54040  
Tel.: +53 78 46 00 al 02  
Fax: +53 78 46 03  
e-mail: ventas@smar.com

## **Smar Laboratories Corporation**

6001 Stonington Street, Suite 100  
Houston, TX 77040  
Tel.: +1 713 849-2021  
Fax: +1 713 849-2022  
e-mail: sales@smar.com

## **FRANCE**

**Smar France S. A. R. L.**  
42, rue du Pavé des Gardes  
F-92370 Chaville  
Tel.: +33 1 41 15-0220  
Fax: +33 1 41 15-0219  
e-mail: smar.am@wanadoo.fr

## **SINGAPORE**

**Smar Singapore Pte. Ltd.**  
315 Outram Road  
#06-07, Tan Boon Liat Building  
Singapore 169074  
Tel.: +65 6324-0182  
Fax: +65 6324-0183  
e-mail: info@smar.com.sg

## **Smar Research Corporation**

4250 Veterans Memorial Hwy. Suite 156  
Holbrook, NY 11741  
Tel: +1-631-737-3111  
Fax: +1-631-737-3892  
e-mail: sales@smarresearch.com

## **NETHERLANDS**

**Smar Nederland**  
De Oude Wereld 116  
2408TM Alphen aan den Rijn  
Tel: +31 172 494 922  
Fax: +31 172 479 888  
e-mail: info@smarnederland.nl

## **UNITED KINGDOM**

**Smar UK Ltd**  
3, Overhill Road - Cirencester  
Gloucestershire -  
GL7 2LG  
Tel: +44 (0)797 0094138  
Fax: +44 (0)797 4747502  
e-mail: info@smarUK.co.uk

# TABLE OF CONTENTS

<b>Tag List Generator .....</b>	<b>1</b>
<b>TAG LIST GENERATOR and DF65 OPC Server Installation .....</b>	<b>1</b>
Required System .....	1
Preparing the Installation .....	1
<b>Introduction .....</b>	<b>1</b>
<b>Using the Tag List Generator .....</b>	<b>2</b>
Creating a New Project .....	2
Adding and Removing ports .....	2
Port Settings .....	3
Specific Configuration for the serial physical mean .....	3
Specific configurations for communication via Ethernet .....	4
Adding a New Port .....	4
Editing/ Removing Ports .....	4
<b>Redundancy .....</b>	<b>5</b>
Application Example .....	5
The main path .....	5
The redundant path .....	6
<b>Adding or Removing a Configuration .....</b>	<b>6</b>
Adding a Configuration .....	7
<b>Editing/Removing a Configuration / Device .....</b>	<b>9</b>
<b>Saving the Project .....</b>	<b>9</b>
<b>The OPC Menu .....</b>	<b>9</b>
Registering the Project .....	9
Generating the Tag List Table .....	10
Verifying the Active Tag List table .....	11
<b>Viewing the Tag List Table .....</b>	<b>11</b>
Tag List .....	11
MCT .....	11
<b>Conversions .....</b>	<b>19</b>
Type of conversion .....	19
<b>Status provided by the DF65 OPC Server .....</b>	<b>22</b>
Block View Status .....	23
<b>The OPC Monitor Software .....</b>	<b>24</b>



## TAG LIST GENERATOR

### *TAG LIST GENERATOR and DF65 OPC Server Installation*

#### Required System

- **Operating System** → Windows NT 4.0 – Service Pack 6, Windows 2000 (Service Pack 2), or Windows XP.
- **Computer** → PC –Pentium Processor 400 MHz or higher.
- **RAM** → 64 Mbytes (128Mbytes for Windows XP)
- **Disk Space** → 10 Mbytes of HD.

#### Preparing the Installation

Using the Smar installation CD “SYSTEM302 Information”, click on the OPC Server V8 and Tag List Generator V8 to install the DF65 OPC Server and Tag List generator respectively.

#### *Introduction*

The software Tag List Generator for the DF65 OPC Server is developed to generate an information Table to the DF65 OPC Server telling which the Tags are for each Modbus Address.

In the HMI side, just configure using links to Tags, in this way, if the user changes the DF65 configuration (the Modbus address will change), but the Tags will not. The OPC Server will be able to read the new Tag List generated after the changes made with the LogicView.

Tag List enables the USER to enter scaled values for Tag values in engineering units. The Tag Scaling allows the user to convert a raw value (unscaled value from the Device) to a given numeric range (in engineering units).

Using the TreeView the USER can select, add, create, delete, and edit the List of Communications Connections (Ports), List of Devices, Types of Conversions.

Under the Controller (Device) Level, a list of Tags will be shown, and the Properties for this Tag will be visualized on the right Frame of the Main Application Frame.

For each Tag, the user can select if this Tag Value will have Conversion or Not and the Type of Conversion that will apply for this Tag Value.

The versions 8.54 and later of the Tag List and support the configuration of the MCT for the DF65. MODBUS Cross Table (MCT) is a technique to optimize variable MODBUS addresses that can significantly increase the speed of MODBUS drivers when accessing variables in a Smar DF65 system.

**Note:** This function is only available for DF65 systems with DF65E or DF65ER.

## Using the Tag List Generator

### Creating a New Project

To create a *New Project*, click on the *File* menu, then click *New*, or click on *New* button, on the toolbar.’



Figure 1- Creating a new project

To open an existing project, to save a project or to close the current project just click on the *File* menu then click on *Open* , *Save* or *Close* respectively, or click on the icons *Open*, *Save* or *Close* (Windows standard) on the toolbar.

### Adding and Removing ports

The DF65 OPC Server supports all types of port combinations (COM1, COM2, Ethernet) having serial and Ethernet communication on the same configuration.

Once the user starts a new project, the Tag List will open a window similar to Figure 2. Next, by right clicking the *Communication* item, Tag List will display a window where the user can configure the parameters described below.

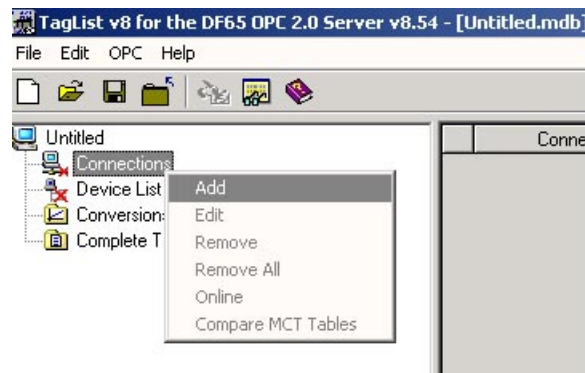
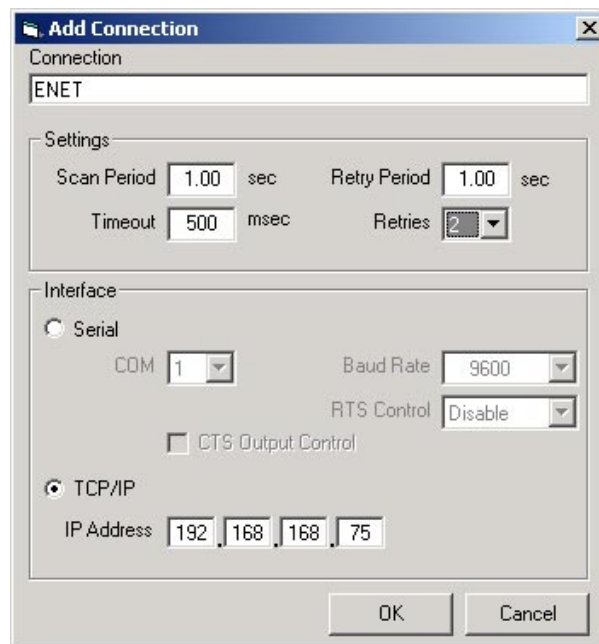


Figure 2- Adding a new port

#### Note

The user must certify that the chosen configuration option (Baud Rate or IP address) is the same as the DF65 configuration, which will be monitored.



**Figure 3- Communication Parameters**

## Port Settings

### Port Name (Connection)

The user must create a Tag for the port to be configured on the Tag List. This tag will be used to define the first Browser level on the Tag List OPC Server.

### Scan Period

It is the time it takes for the DF65 OPC Server to read the Tags (OPC Points) from every slave devices, that is, the time between cyclic questions.

### Retry Period

When the OPC Server Client runs out of configured tries in Retries, it verifies each time interval established by Retry Period whether or not the connection is active.

### Timeout

Waiting time for a response after a message from the DF65 Server is being sent to the slave. After this period of time, the DF65 OPC Server retries to establish communication, based on the number configured on Retries.

### Retries

Number of times the DF65 OPC Server software will try a new communication after waiting for the specified value on the Timeout parameter.

## Specific Configuration for the serial physical mean

If the user chooses to use serial communication, it can be through EIA-232 or EIA-485. The connection and cable specification are the same used in the communication between the DF65 and the LogicView, and are described in the “DF65 Manual”.

### Com

Allows the user to choose which serial port will be used for communication.

### CTS Output Control

When this parameter is enabled, the OPC Server will transmit only when the CTS is active.

### RTS Control

The options of this parameter are:

**Disable:** RTS inactive (off)

**Enable:** RTS active (on)

**Handshake:** Activates the RTS, if the receiver buffer is ¾ occupied and disables when the receiver buffer is less than half occupied.

**Toggle:** RTS will be activated if there are bytes to be transmitted, and RTS will be disabled after every byte is transmitted.

## Specific configurations for communication via Ethernet

### IP Address

In case of Ethernet TCP/IP communication, the user should set the logic controller Ethernet card’s IP address (MB700 or ENET700) which should be communicated.

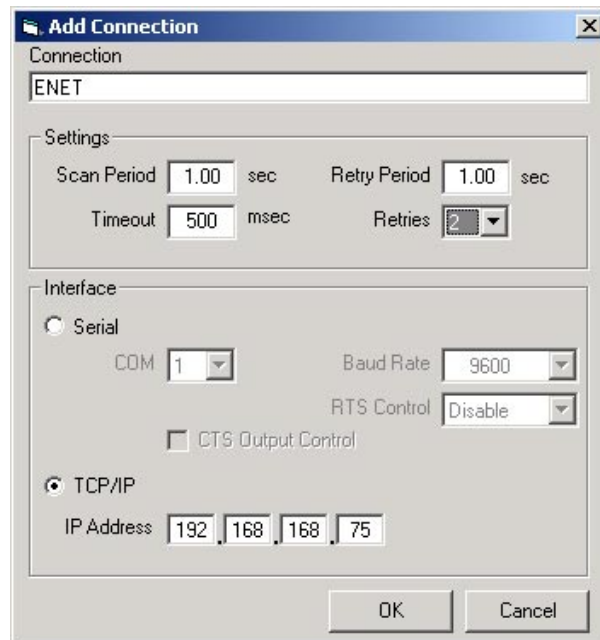


Figure 4- Adding an Ethernet Port

## Adding a New Port

The user can add more serial ports or Ethernet if required. To add a new port, right-click at Communication Connections and select Add.



Figure 5- Adding a New Port

## Editing/ Removing Ports

The user can edit or erase a communication Port, for that, just right click on the added port and the user can change its current settings, or click on *Remove* to remove the desired port.



## Redundancy

The DF65 OPC Server supports system redundancy. The OPC redundancy follows a main path philosophy and a redundant path (backup). When the system detects the main path is not communicating, the redundant path takes over communication. When communication on the main path returns, again, it becomes the active path and the redundant gets back to being the backup.

The redundant path, even in a state of backup, it tests itself if everything is OK. Each port (main or backup) notifies its current status through Status.

Redundancy could take place even in different physical means/data link layer: MODBUS TCP and MODBUS RTU. For example, two Ethernet networks or even one Ethernet network and one EIA 485 network. The user can configure an existing redundant network on the system.

### Application Example

Consider an application example shown in Figure A where the DF65 OPC Server monitors points from 3 DF65 in an Ethernet network. In this case it is used path redundancy for the DF65’s, which in case of main path failure; the DF65 OPC Server uses an alternative path for supervision.

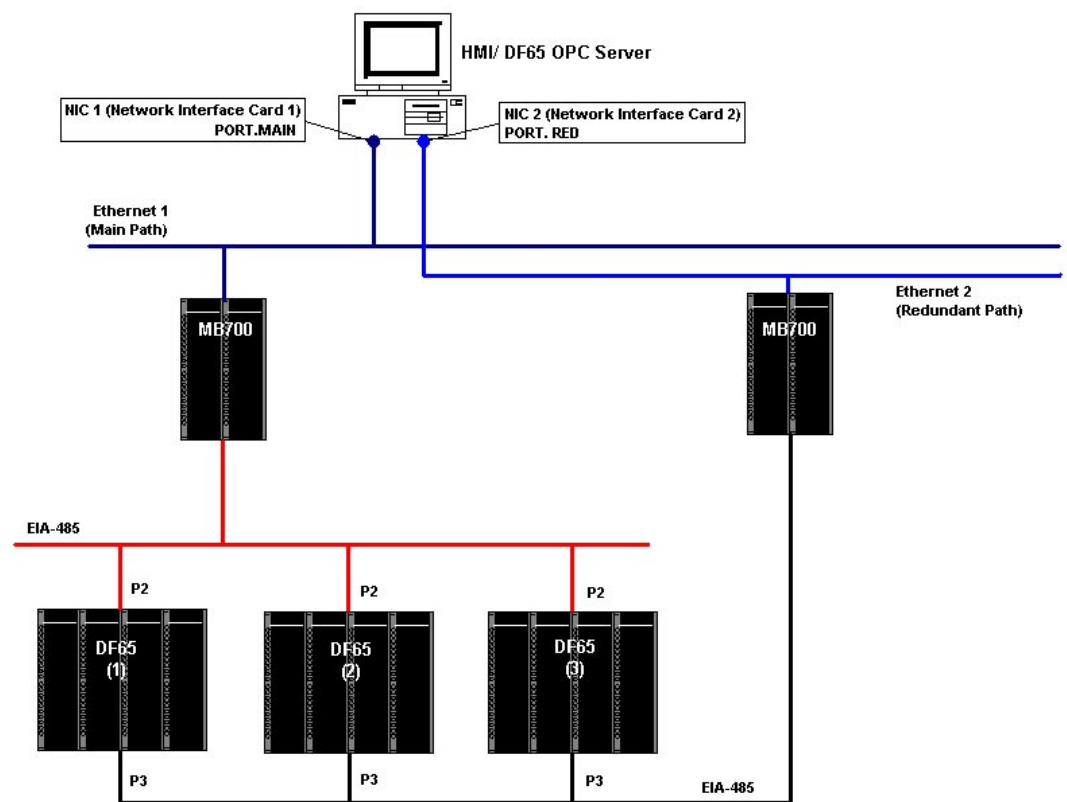


Figure 6- An application involving an DF65 OPC Server, DF65 and MB700.

### The main path

Right after a new project is created, the Tag List Generator will ask how the DF65 OPC Server and the DF65 will communicate. The DF65 supports the communication via serial port (232 or 485) or via Ethernet (TCP/IP). In the case of the next figure, the main path is through the Ethernet port ("Main\_Port")

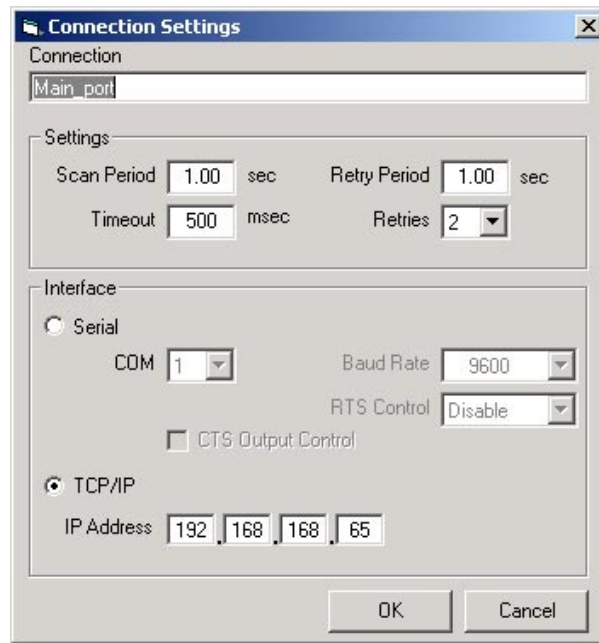


Figure 7- Choosing a communication channel

### The redundant path

After configuring the main path, the user should add a new port (channel) which will be the redundant (backup).

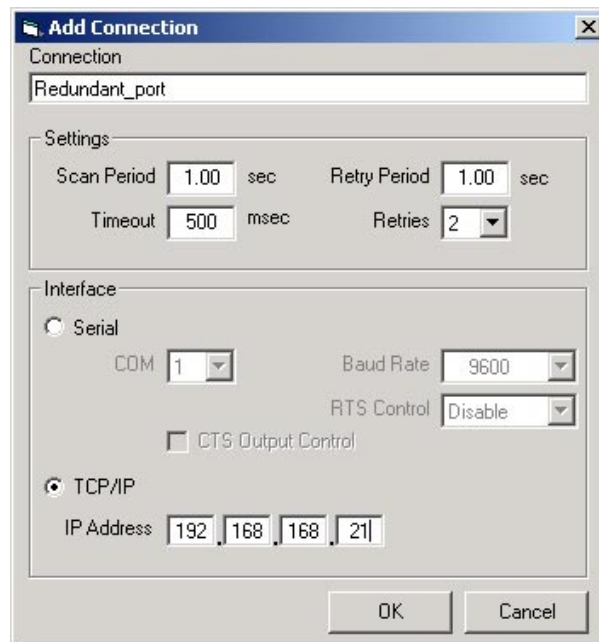


Figure 8- Adding a redundant port

## Adding or Removing a Configuration

Before adding a new configuration, the user is supposed to create a configuration in the LogicView software.

**Note**

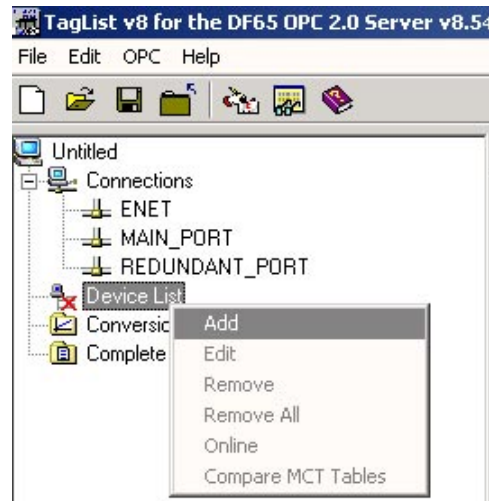
If the user has several DF65's with different addresses, a configuration file should be generated (\*.PL7, \*.PL8) with a different name for each DF65 used in the project.

## Adding a Configuration



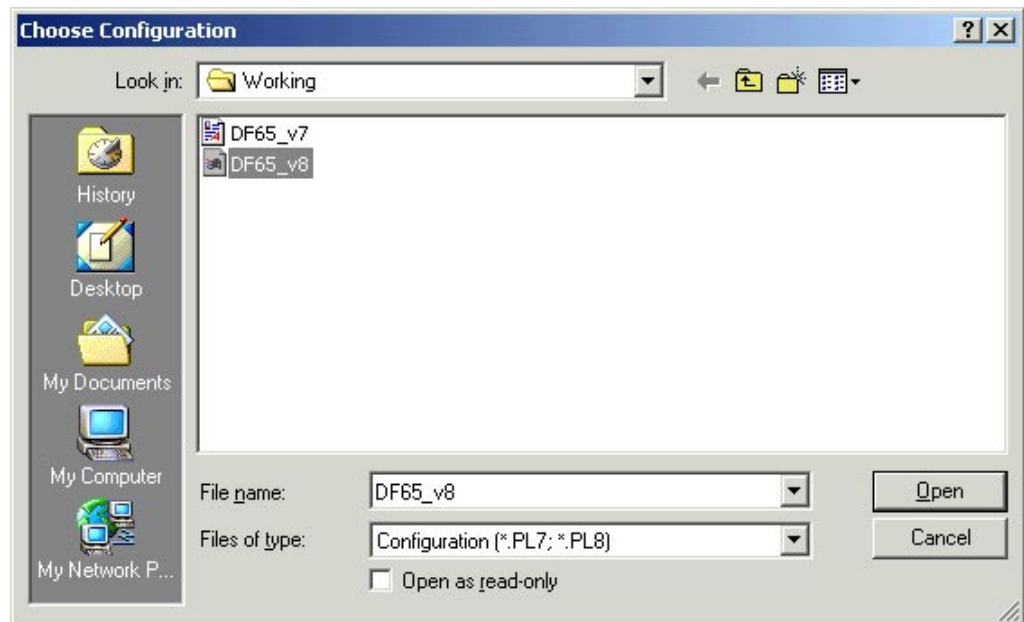
The configuration must be a valid configuration generated by LogicView from Smar.

To add a new configuration the user should open the menu **Edit → Add** or in the left pane of the Tag List Application.



**Figure 9- Adding a new configuration**

After the user adds a configuration, the Tag List will open a window (Figure 10) where the user should choose the file which contains the desired configuration.



**Figure 10- Locating the configuration to be added**

### Note

The user will not be able to include duplicate configuration names, even if in different sub-directories.

Next the Tag List will open a window for the user to configure a few parameters regarding the chosen configuration. This configuration is present in the DF65 memory, so a reference is made to the device.

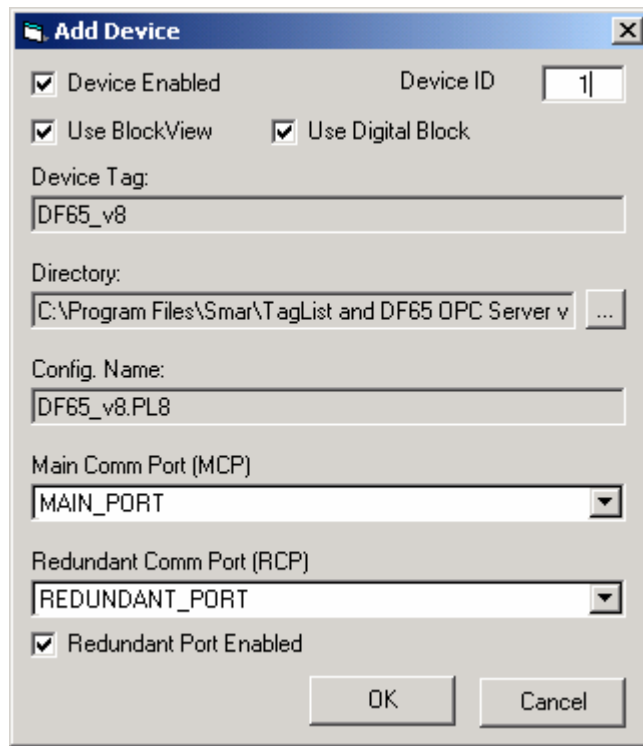



Figure 11- Device Configuration


**Note:**

The Block View and Digital Block features are only available for Smar devices.

In the window above (Figure 11) the user must configure a few parameters regarding configuration and the recently added device.


- **Device Enabled:** Enables/disables the device. In case this parameter is not selected, the OPC Server will not monitor it.
- **Device ID:** Device address in the MODBUS network.
- **BlockView:** Enabling this parameter the user can compact the commands of the OPC Server, increasing communication speed.
- **Digital Block:** Enabling this parameter the user can read all digital points using only one command of the OPC Server, increasing communication speed.
- **Redundant Port Enabled:** Enabling this parameter, the user will have enabled the redundant channel.

The Redundant Enable ICON is displayed as (In GREEN) :  when it is enabled.

Redundant Disabled ICON is displayed as (In RED) :  when it is disabled.

**Redundancy:**

Just enable the Redundant Enabled and inform which one is the redundant channel/port.

- **Main Comm Port:** the user should inform which port previously configured will be the main channel.
- **Redundant Comm Port:** In case redundancy is used, the user should inform which configured port will be used as **redundant channel**.
- **Directory:** Directory where the added configuration is located. Clicking on  button is possible change this directory. This procedure is useful when the configurations (.tag and .pl8) are transferred from any computer to another.
- **Configuration Name:** Name of the configuration associated as a device (for example, DF65).
- **Device Tag:** Is the Tag in which the device is referred by the OPC Server

After the ports are added and configured, the user should view a screen similar to the following

picture. Two ports were included, a main serial port, a redundant port, through an Ethernet port.

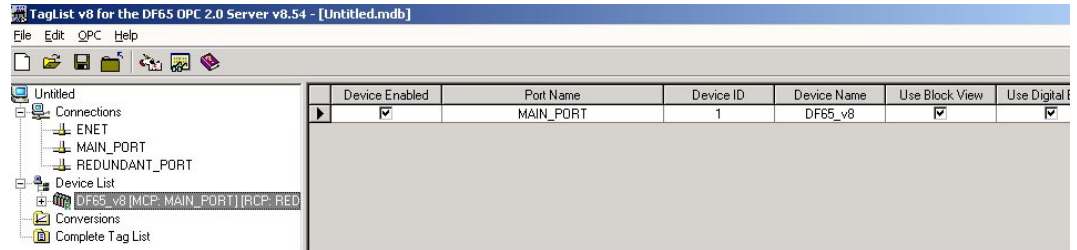


Figure 12 - OPC Connection through a Serial Port/Ethernet port configured via Tag List

## Editing/Removing a Configuration / Device

To edit or remove a configuration, it is necessary to select the configuration on the main screen. Right click it, the edit/remove configuration dialog will appear, then just change the desired settings and click on OK for the changes to take place, or click on the *Remove* to remove the configuration.

## Saving the Project

To compile the project (to generate the Tag List) it is necessary to first save the current project.

To save the project using the menu, click on *File*, then *Save* (if the project has already a name) or *Save As* (if a new you wish to save the project with a new name), or on the icon *Save (windows standard)* on the toolbar.

## The OPC Menu

The OPC Menu has the following options:

- OPC Monitor
- Show Active Tag List
- Register Active Tag List



Figure 13- Accessing the OPC Menu

## Registering the Project

After the project name is chosen, it should be registered in Windows, in order for the reading software of the DF65 OPC Server to recognize which configuration to search for. So every time a new project or project name is changed, it should be registered, to be indicated as the current project.

To register a project, just click on the *OPC* menu, then click on *Register Tag List*, or click on *Register Configuration*, on the Tool bar, as shown in figure below.



Figure 14- Registering the current Tag List

### Generating the Tag List Table

The program will generate the points monitored by the DF65 OPC Server. The Tag List Table associates the address/Tag in the DF65 with the name/Tag given to it by the OPC server.

While the tag List is being generated, the “Tag OPC” (name of the DF65 point that will appear for the user on the OPC client) is assembled as follows:

- If the user defined a User Label on the LogicView for the point, then this will be defined as a name for the Tag OPC of the point.
- If the user did not define a User Label, then the Tag OPC will be the point’s Default Label.

To generate the Tag List Table, click on *OPC* and then *Register Tag List*, or click on the option *Register Tag List* on the Toolbar.

**Note**

Each change done in the configuration in the LogicView, a new TagList Table must be generated. The user needs to open the current Tag List project and execute the command to generate the Tag List Table again.

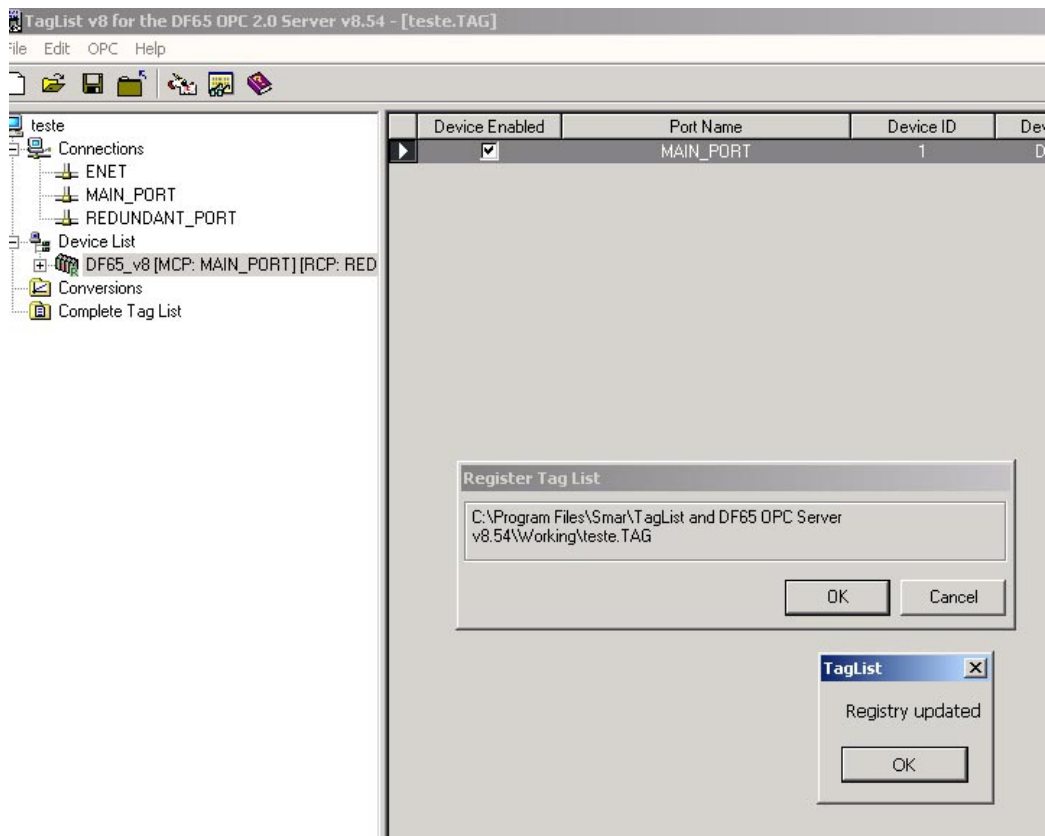


Figure 15- Generating the Tag List Table

After the project registration and the Tag List generation, the system is ready to monitor the DF65 points using the DF65 OPC Server. The Tag List program does not need to be running, (the Tag List can be closed). The operational system automatically locates the current configuration for the DF65 OPC Server when activated by a HMI Software (OPC Client).

## Verifying the Active Tag List table

In case the user wishes to check which Tag List Project is registered on the computer, click on the OPC menu, then click on *Show Active Tag List*, then the program will show the active Tag List.

## Viewing the Tag List Table

The user can verify the table generated by the Tag List. In order to make it, click on (+) of the added configuration, two options are available: Tag List and MCT.

### Tag List

The figure below shows the Tag List table generated for the current configuration.

Tag	Address	Conversion	Type	Description
DIG_OUT1.0	00001	<None>	BOOL	led0
DIG_OUT1.1	00002	<None>	BOOL	led1
DIG_OUT1.2	00003	<None>	BOOL	led2
DIG_OUT1.3	00004	<None>	BOOL	led3
DIG_OUT2.4	00005	<None>	BOOL	led4
DIG_OUT2.5	00006	<None>	BOOL	led5
DIG_OUT2.6	00007	<None>	BOOL	led6
DIG_OUT2.7	00008	<None>	BOOL	led7
TEMP0	02001	<None>	BOOL	first light
TEMP1	02002	<None>	BOOL	second light
TEMP2	02003	<None>	BOOL	third light
TEMP3	02004	<None>	BOOL	fourth light
TEMP4	02005	<None>	BOOL	fifth light
TEMP5	02006	<None>	BOOL	sixth light
TEMP6	02007	<None>	BOOL	seventh light
TEMP7	02008	<None>	BOOL	eighth light
TEST.0	02009	<None>	BOOL	
TEST.1	02010	<None>	BOOL	
TEST.2	02011	<None>	BOOL	
TEST.3	02012	<None>	BOOL	
TEST.4	02013	<None>	BOOL	
TEST.5	02014	<None>	BOOL	
TEST.6	02015	<None>	BOOL	

Figure 16- Viewing the Tag List table

In the above table, it can be seen:

- **Tag:** configuration point names.
- **Address:** Modbus addresses of the configuration points.
- **Conversion:** filed to convert the data types.
- **Type:** data type.
- **Description:** description done in the LogicView through the Global Table (it can be done also in the Tag List).

### MCT

In this option the user can choose which points will be monitored by the device that uses the Modbus protocol. Clicking on (+) at left of MCT, two folders will be showed:

- Working
- Device

Type	Discrete Outputs (0x)	Discrete Inputs (1x)	Analog Inputs (3x)	Analog Outputs (4x)
N° points	250 points	250 points	250 points	500 points

**Working**

Clicking on this folder, four Address Ranges will be open. This folder becomes available the points which are done download.

- 0x – Digital Outputs and Virtual Points.
- 1x – Digital Inputs.
- 3x – Analog Inputs.
- 4x – Analog Outputs, Function Blocks and Special Registers.

**Device**

Clicking on this folder, four Address Ranges will become available to visualize the configuration points.

- 0x – Digital Outputs and Virtual Points.
- 1x – Digital Inputs.
- 3x – Analog Inputs.
- 4x – Analog Outputs, Function Blocks and Special Registers.

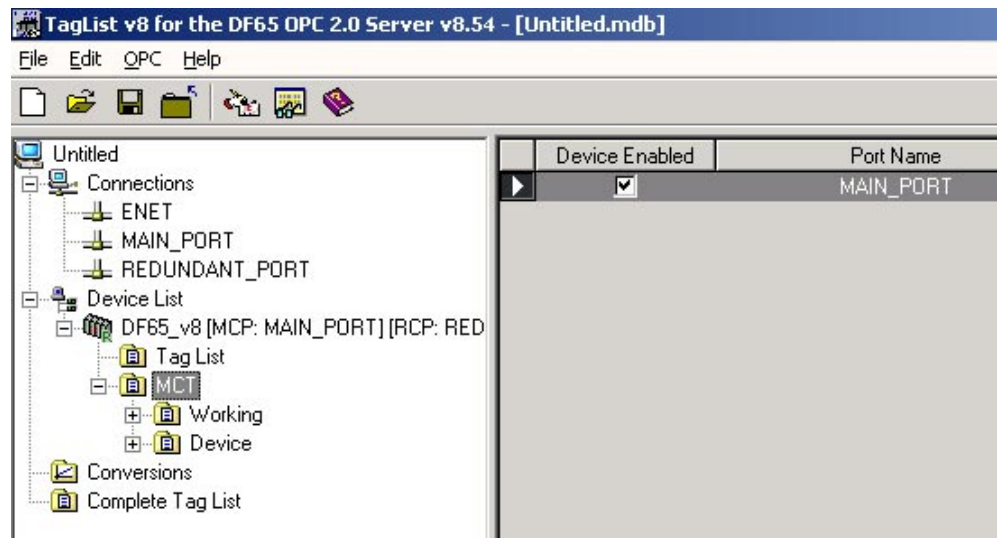


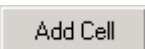
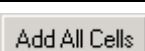
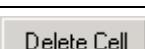


Figure 17- MCT Option

**Using the MCT**

When one of the address ranges is selected in the Working folder, a table at left of the Address table appears. In this table the addresses are added which must be configured. Four buttons also appear below the screen to do the Tag List table.

Button	Description
	Move the Tags between the lines up and down
	Remove Tag from the table
	Add lines in the table
	Add the whole table at once
	Delete lines



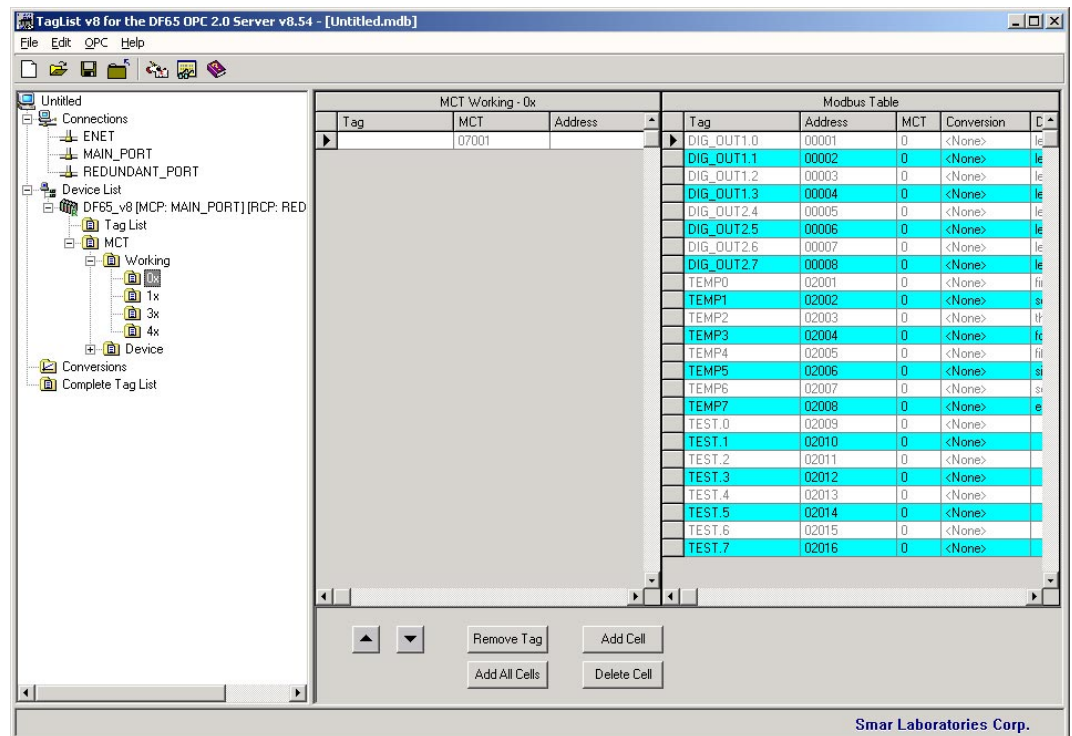


Figure 18- MCT Option

**Description of the Address Table Columns**

- Tag: Name of the point
- Address: Point Address
- MCT: Counter of how many times the Tag was added in the MCT table
- Conversion: Allows scale conversion
- Description: Point description

**Configuring the MCT table**

In order to configure the MCT table, follow the steps:

- 1) Click on the *Add Cell* button.  
One line will be added in the table.

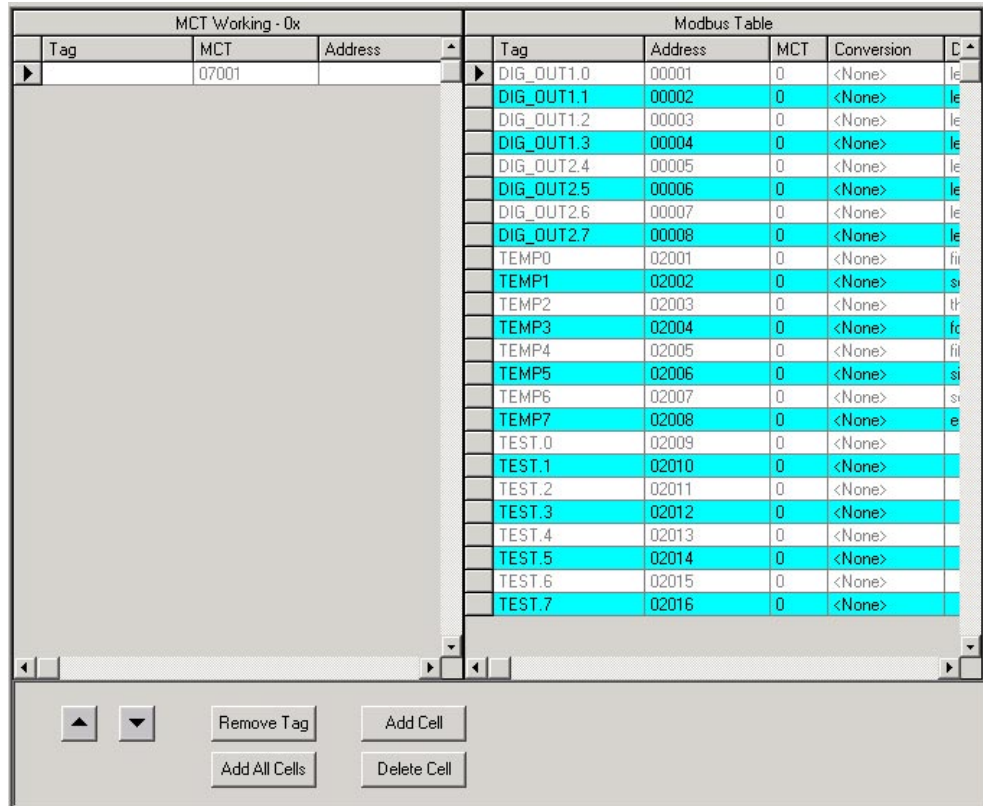


Figure 19- Configuring the MCT table

- 2) Click with the left button on the point which will be added in the table.

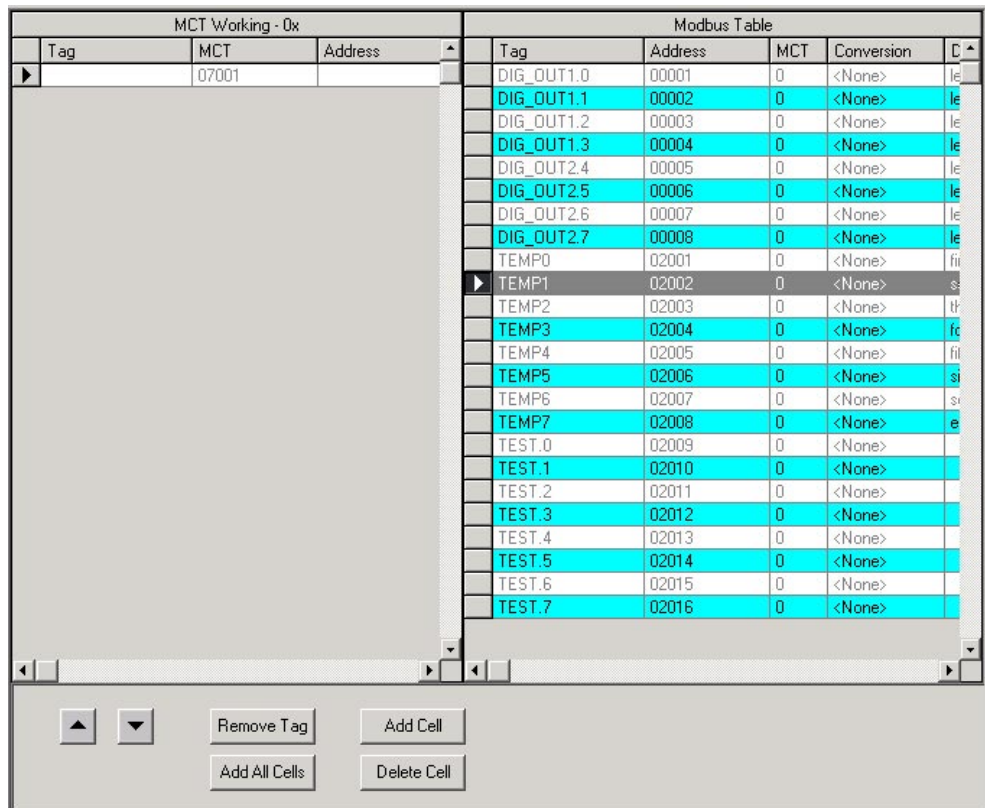


Figure 20- Selecting the points for the Tag table

- 3) Click with the right button on the line and drop to the added cell.

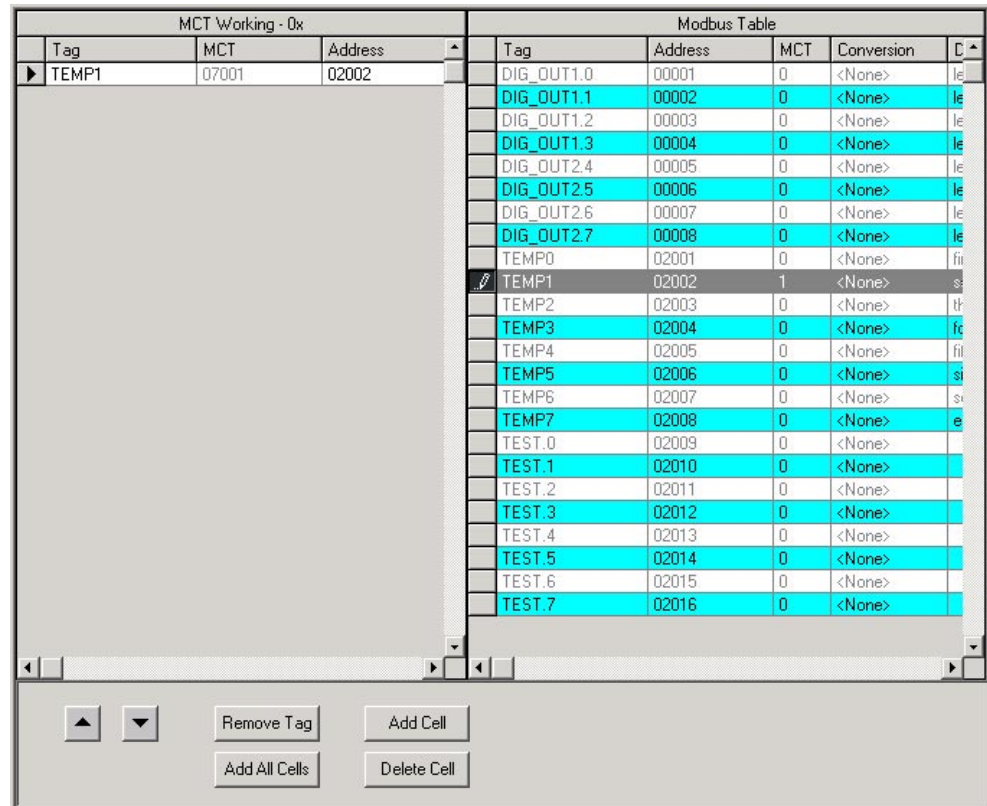


Figure 21- Adding points in the Tag table

- 4) Repeat the steps above to add all the points which must be monitored.

**Note**

The Tag List configuration must be the same which is running in the DF65.

The user can do the upload of the configuration points without do the download previously, in order to check the DF65 configured points. If the configurations have the same name, it is impossible.

**Consistency Check**

If any point is configured in the MCT Table, in the Working folder, and it is not in the Total Point Table, its address will be red.

If any address in the MCT Table, in the Device folder, is red, it means this address is not in the configuration that is running in the DF65.

**Download to the Device**

To configure the MCT Table, it is necessary to do the download of the added points. In order to make it, click with the right button on each one of the address ranges in the Working folder. A popup menu will be opened, select the *Download to Device* option. Or click on the toolbar **Edit** → **Download to Device**. See the following picture:

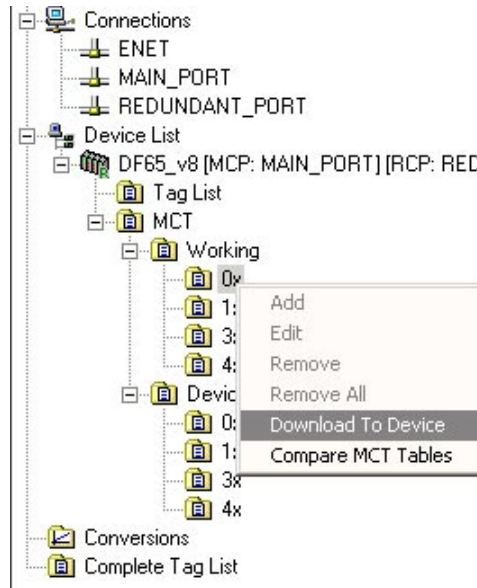


Figure 22- Doing the Download to Device

After doing the download of the all points that were added in the MCT Tag Table, a message about the Successful Download will appear.

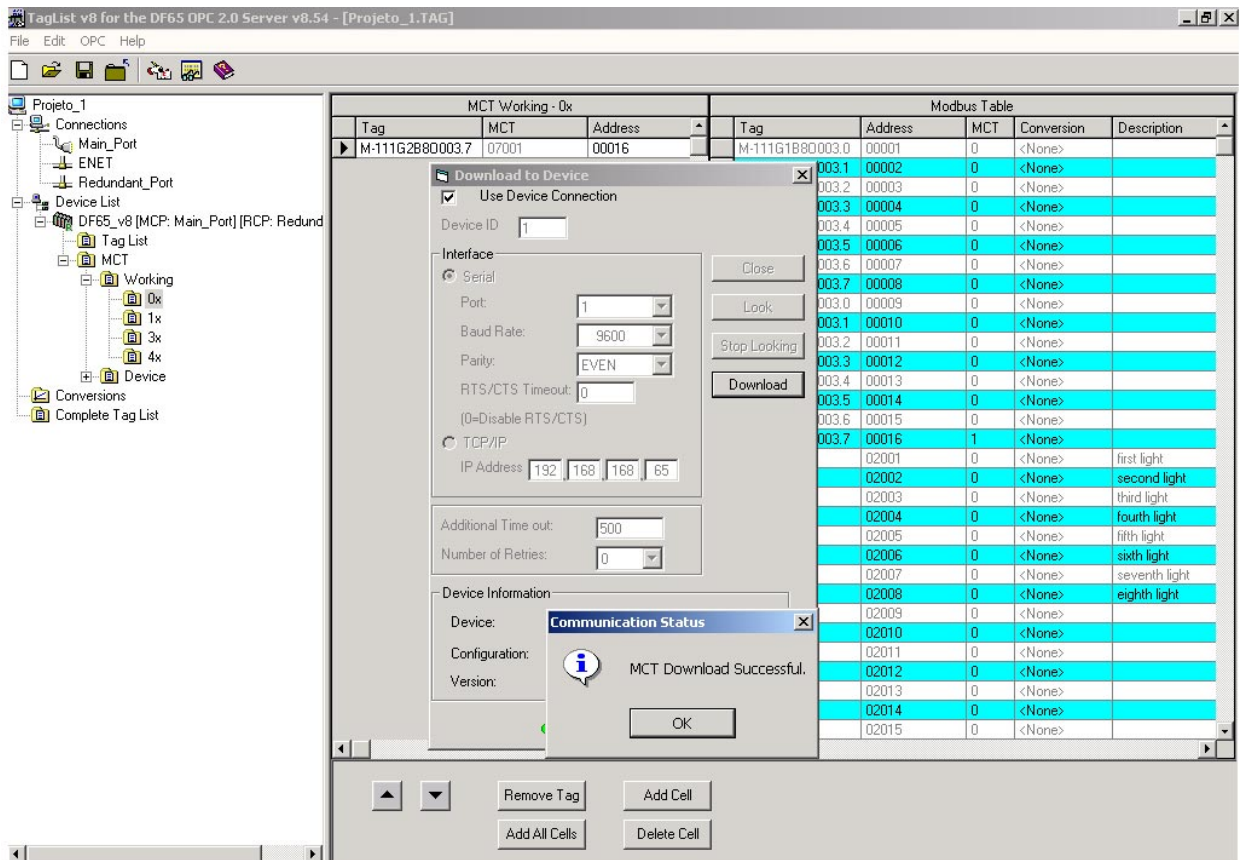


Figure 23- MCT Download Successful

**Note**  
The Upload function can not be done successful if the Tag List and DF65 configuration is not the same.

### Upload from Device

After all points of the MCT Tags Table have been sent to device, the upload of these points must be done in order to compare them. In order to make it, click with the right button on the Address ranges in the Device folder, a popup menu will be open, choose *Upload from Device*. Or click on the toolbar **Edit** → **Upload from Device**.

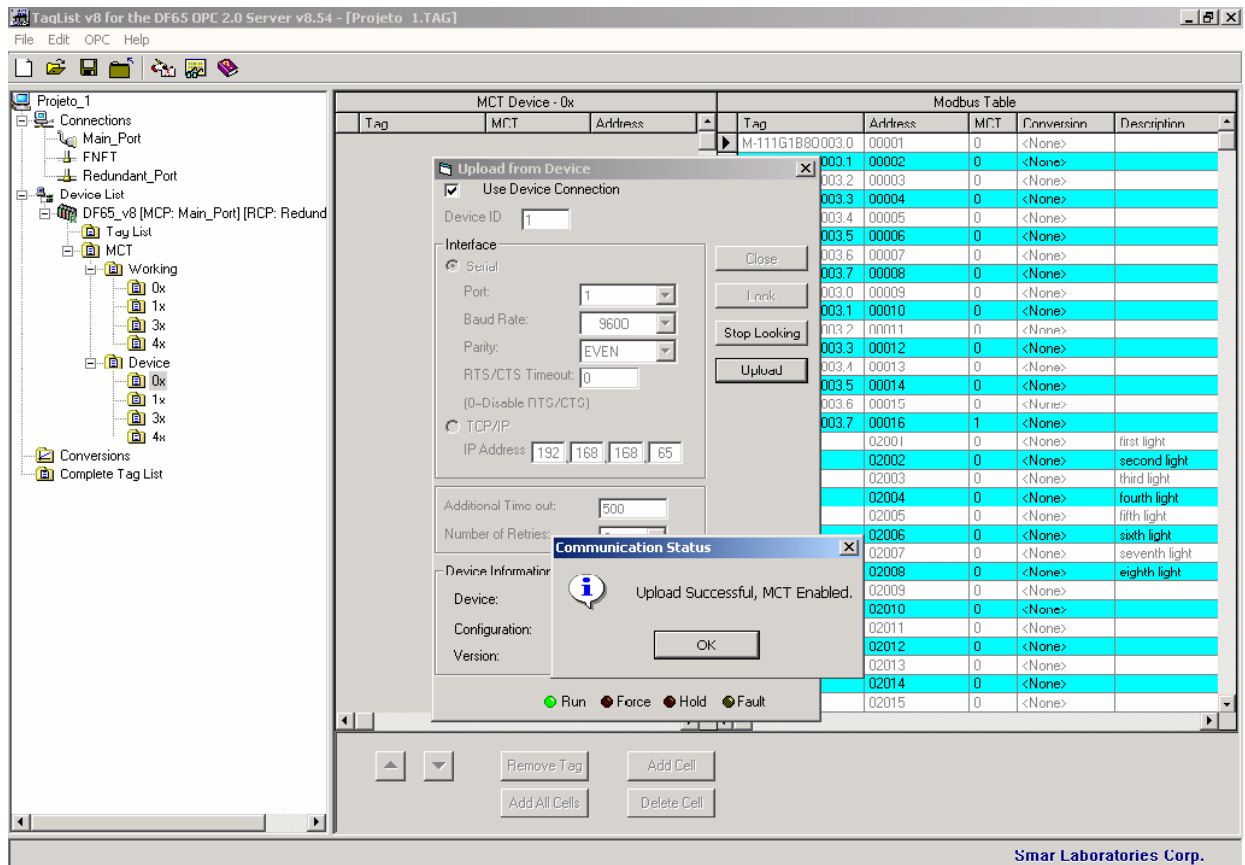


Figure 24- Upload Successful

Upload all Address ranges.

### Comparing the Tag Tables

After doing the Upload of all points, it is possible to do the comparison of the Working and Device Tables. Click with the right button on one of the address ranges in the Working or Device folder, a popup menu will be opened, choose the *Compare MCT Tables* option, or do this clicking on the toolbar **Edit** → **Compare MCT Tables**.

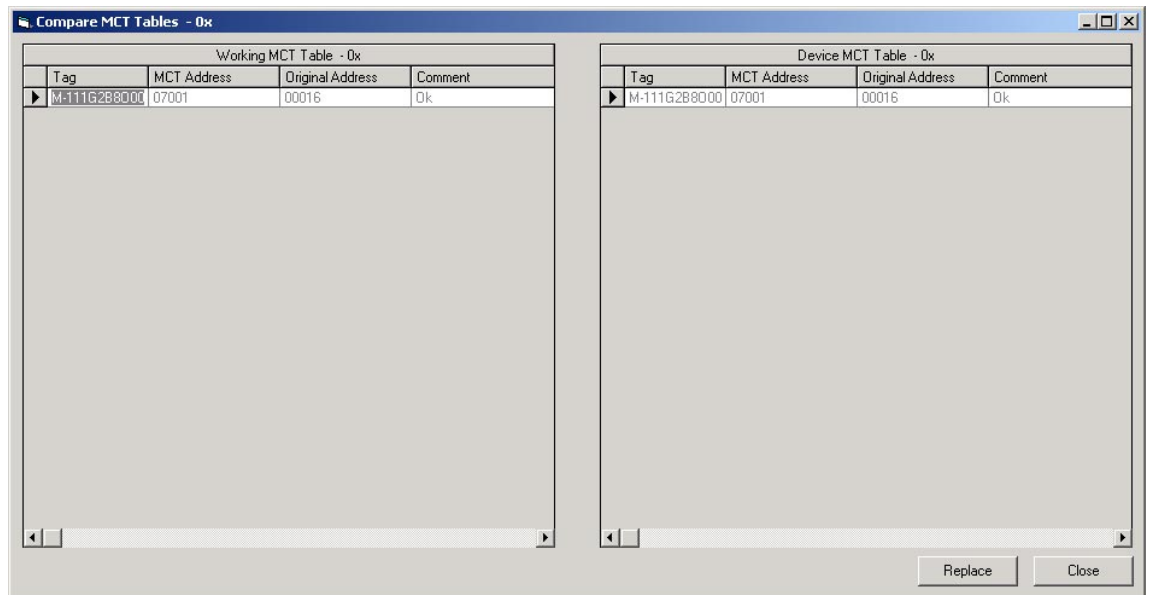


Figure 25- Comparing the Tag Tables

It can observe:

- **OK:** The Device and Working original addresses are the same.
- **Tag Mismatch:** The Device and Working original addresses are different.
- **Not found in Device:** the original address was in Working was not found in Device.

There are also two buttons on the right lower corner:

- **Replace:** replace all points from the Device table to Working table.
- **Close:** close the active window.

## Conversions

For each Tag, the user can select if this Tag Value will have Conversion from Device Range to Engineering Units, or Not. First the USER needs to create a "Conversion Type" that will apply for a Tag Value. After having created a Conversion Type, the USER needs to assign this Conversion to a Tag, or assign to a group of Tags, that use the same conversion type.

When the OPC reads the value from the Device, it will convert this value using the conversion rules created, and provide the converted value to the OPC Client.

**Note**

Only Tags with DATA TYPES: WORD, DWORD, INT, and REAL, are allowed to have CONVERSION, the Other DATA TYPES are NOT allowed. Only Tags that can be represented in Eng. Units (EU) can be converted.

Tags with DATA TYPES: BOOL and BYTE are Tags that has NO conversion to EU.

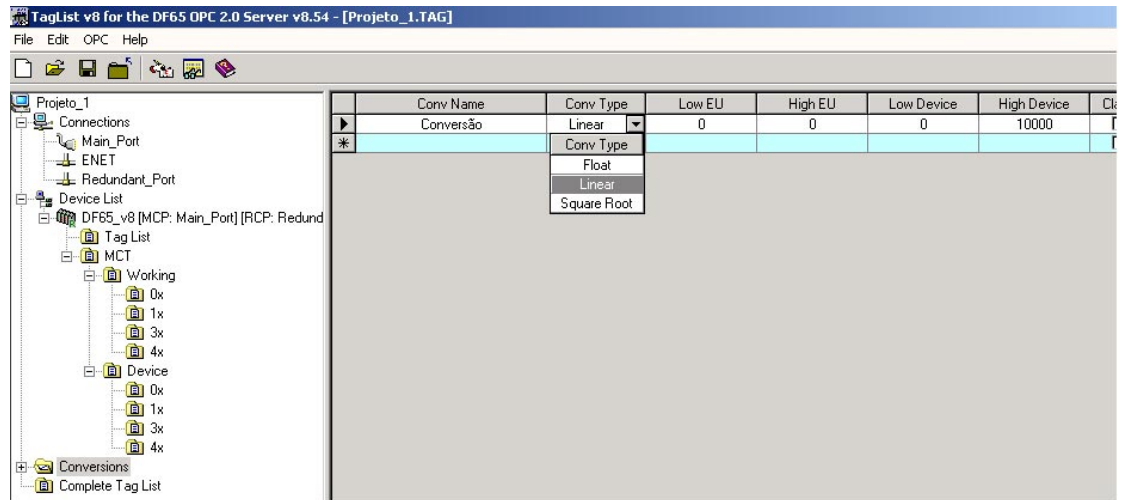


Figure 26- Conversions

### Type of conversion

There are three types of Conversion:

#### Floating Point Conversion

If the USER checks the Option: "Floating Point Conversion", the OPC Server will convert the data into float data type, but will not change the value itself.

#### Linear Conversion

The OPC Server will use linear conversion between EU and Device scale, if the option: "Linear Conversion" is checked.

There are two types of units:

- EU            Engineering Unit (client scale)
- Device      Device range (device scale)

#### Square Root Conversion

This conversion performs the following operations:

$$Ri = \sqrt{Y} = \sqrt{(Y - y1)} * \sqrt{(y2 - y1)}$$

$$Rf = LowEU + \left[ \frac{(HighEU - LowEU) * (Ri - y1)}{(y2 - y1)} \right]$$

Where:

- Ri: Intermediate Result
- Rf: Final Result after the linear conversion
- Y: Tag value
- y1: Value defined for Low Device
- y2: Value defined for High Device

For this conversion, there is the Cut Off parameter. When the Tag value (Y) is lower than the value defined for Cut Off, the result of the conversion is zero. When the Tag value is higher or equals to, the result of the conversion is obtained according to the equations showed above. The linear conversion is applied to the obtained result, considering the values defined in High Device, Low Device, High EU and Low EU.

**If Y < Cut Off**

Then Ri=0

$$Rf = LowEU + \left[ \frac{(HighEU - LowEU) * (Ri - y1)}{(y2 - y1)} \right]$$

**If Y ≥ Cut Off**

Then  $Ri = \sqrt{Y} = \sqrt{(Y - y1) * \sqrt{(y2 - y1)}}$

$$Rf = LowEU + \left[ \frac{(HighEU - LowEU) * (Ri - y1)}{(y2 - y1)} \right]$$

Example:

For the Square Root conversion, it considers the values below:

- Low Device: 0
- High Device: 10000
- Low EU: 10
- High EU: 50
- Cut Off: 10

It has the following results according to the tag values showed below, and the equations presented above:

Y (Tag value)	Ri (Intermediate result)	Rf (in Engineering Unit)
11	331.6625	11.3267
10	316.2278	11.2649
9	0	10



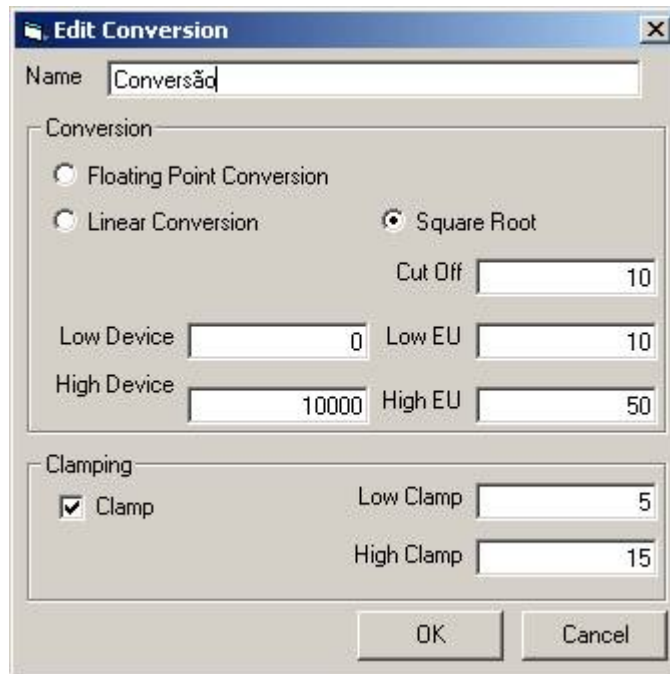


Figure 27- Conversion Types

**Note**

If the “Clamp” option is selected, the data value will be limited to its High Limit Value (High Clamp), when it exceeds the upper limit, and similarly with Low Limit parameter. The Clamp occurs after the conversion.

After setting a conversion type, the user can set the conversion for the specific TAG directly in the Device Tag List. Just choose the TAG, and in the conversion FIELD, click at it and choose the type of conversion in a drop down list as the following picture shows:

	Tag	Address	Conversion	Type	Description
	TON7.CTA	42520	<None>	INT	
	TON7.PST	42521	<None>	INT	
	TON1.STS	42522	<None>	WORD	
	TON1.CTA	42523	<None>	INT	
	TON1.PST	42524	<None>	INT	
	TP1.STS	42525	<None>	WORD	
	TP1.CTA	42526	<None>	INT	
	TP1.PST	42527	<None>	INT	
▶	TP3.STS	42529	<None>	WORD	
	TP3.CTA	42530	Conv Name	INT	
	TP3.PST	42531	<None>	INT	
	TP4.STS	42532	Conversão	WORD	
	TP4.CTA	42533	<None>	INT	
	TP4.PST	42534	<None>	INT	
	TP5.STS	42535	<None>	WORD	
	TP5.CTA	42536	<None>	INT	
	TP5.PST	42537	<None>	INT	
	TP6.STS	42538	<None>	WORD	
	TP6.CTA	42539	<None>	INT	
	TP6.PST	42540	<None>	INT	
	TP7.STS	42541	<None>	WORD	

Figure 28-Using the Conversion

## Status provided by the DF65 OPC Server

After the user has generated the Tag List table, the OPC Client (an HMI interface for example) can read the variables referred by the Tags. Also, the OPC Server provides some status which contains additional information.

### ■ Status\_Port.<Configured Port Tag >

- **CommID:** A number is attributed to the configured port by the Tag List.
- **CommPortStatus:** Shows the status on the port.
  - 1 - Normal Communication on the port.
  - 0 - Communication failure on the port.
- **ActualScan:** It is the period the DF65 OPC Server takes to read all devices connected to the configured port.
- **ScanPeriod:** It is the value of the Scan Period parameter configured for the port.
- **RetryPeriod:** It is the value of the Retry Period parameter configured for the port.
- **Timeout:** It is the value of the Timeout parameter configured for the port.
- **Retries:** It is the value of the Retries parameter configured for the port.

### ■ Status\_Device.<Device Tag containing the configuration>

- **MainPortStatus:** Indicates the main path’s communication status for the device.
  - 1 - Communication without problems
  - 0 - Failure on the main channel
- **RednPortStatus:** Indicates the redundant path’s communication status for the device.
  - 1 - Communication without problems
  - 0 - Failure on the Redundant channel
- **UseBlockView:** Indicates if the user has configured the "Block View" option.
  - 0 - the user disabled this option
  - 1 - the user enabled this option.
- **UseDigitalBlock:** Indicates if the user has configured the "Digital Block" option.
  - 0 - the user disabled this option
  - 1 - the user enabled this option.
- **MainPortID:** Indicates the main port number where the device is connected. This value is equal to CommID for the specified port.
- **RednPortID:** Indicates the redundant port number where the equipment is connected. This value equals to CommID for the specified port.
- **ActivePort:** Indicates which path is active.
  - 0 - the Main Path is active
  - 1 - the Redundant Path is active
  - 2 - no path is being used or reading failure
- **Enabled:** Indicates if the user has enabled or not the device.
- **MainScanInterval:** Indicates the real time interval between cyclic readings of all Tags/variables from the current device, through the main path.
- **RednScanInterval:** Indicates the real time interval between cyclic readings of all Tags/variables from the current device, through the redundant path.
- **MainActualScan:** It indicates the real time taken to read all tags/variables from the current device, through the main path.
- **RednActualScan:** It indicates the real time taken to read all tags/variables from the current device, through the redundant path.
- **NbrCommCmmd:** It indicates the number of Modbus commands that the OPC Server is sending in order to supervise the requested points.
- **ViewStatus:** Indicates the current status of the Block View current used by the OPC for scanning the device. The status composition is as follows:
  - ViewStatus0x:
    - 0 = Block View not being used
    - 1 = Block View is being used
    - > 1 = Error on view assembly or view is still being assembled by the OPC.

Where ViewStatus0x:

- ViewStatus01 - Block View Status 01
- ViewStatus02 - Block View Status 02
- ViewStatus03 - Block View Status 03
- ViewStatus04 - Block View Status 04
- ViewStatus05 - Block View Status 05
- ViewStatus06 - Block View Status 06
- ViewStatus07 - Block View Status 07

- ViewStatus04 - Block View Status 08

If the ViewStatus value is greater than 1, an error occurred on the assembly or ViewStatus is still being assembled. The value is a BIT combination, and to know what the status means, the configured BIT should be known according to the table below:

### Block View Status

BIT	DESCRIPTION	VALUE (DEC)	COMMENTS
0	Block View OK	1	If the block view is OK the other Bits should be zero
1	NEED ASSEMBLY	2	OPC has received a new configuration, and will assemble a new Block View
2	IS ASSEMBLING	4	OPC Server is assembling the Block View
3	USE COMMAND LIST	8	An error has occurred during the assembly. OPC is using MODBUS commands.
4	ASBL RSP CNF FAIL	16	Block View assembly has failed – CONFIGURATION ERROR (Response Code 07(hex)). A possible cause would be an inexistent Modbus point. In this case the OPC Server is using individual commands.
5	ASBL RSP BVW FAIL	32	Block View Assembly has failed - BLOCK VIEW IS FULL (Response Code 0B(hex)) A possible cause would be that there are other Modbus Masters (other servers for example) accessing the same slave device using view. In this case the OPC Server is using MODBUS command standards and as soon as one of the views is available, it will be read by VIEW.
6	-----		
7	ASSEMBLY FAIL	128	Block View assembly has failed- (communication failure) – This BIT will be 1, when the bits 4 and 5 fail.

## The OPC Monitor Software

The Tag List has a software that helps the configuration test and can be used to monitor points using the DF65 OPC Server, and check for errors in the configuration. It is the **OPC Monitor**. It is accessed through the OPC menu (see figure 12). Just access the menu **OPC→ OPC Monitor**.

The **OPC Monitor** is an OPC client that can work with any OPC Server. In case of DF65 OPC Server monitoring, it allows the user to view the values of the Configured variables/Tags and the status described on the previous item.

In case the DF65 OPC Server is used, initially the **OPC Monitor** will show the screen below, which the user should choose the Server Smar.DF65Server.1

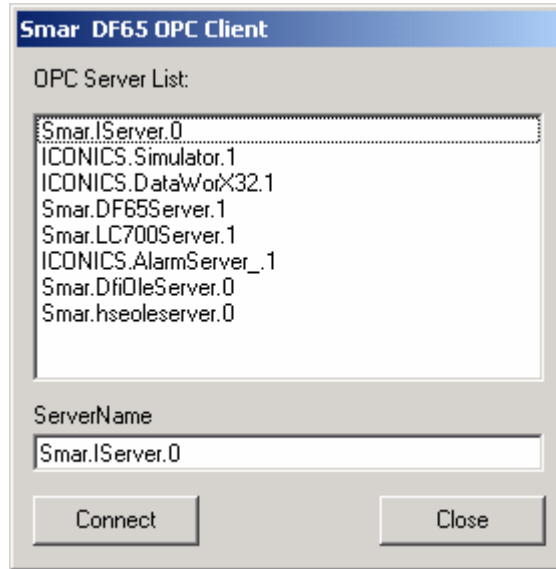


Figure 29- Choosing the OPC server for the OPC Monitor

Right after, the OPC Monitor automatically opens the screen shown on figure below.

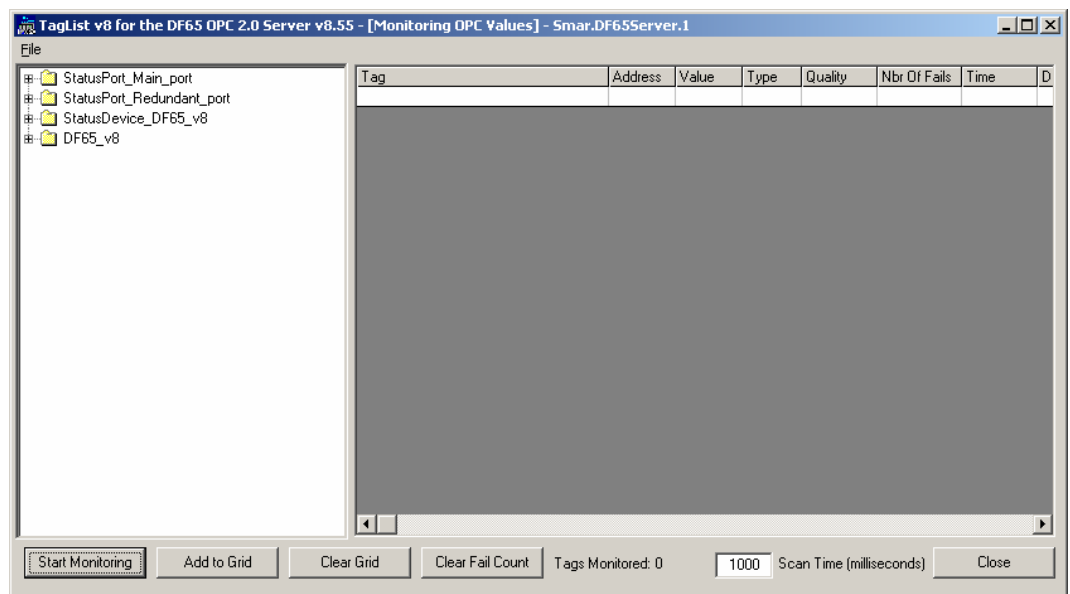


Figure 30- The OPC Monitor

On the column on the left, there are (in this order): the channel status, device status and variables/Tags values. Note that the devices have a specific MODBUS ID and this order must be respected. Clicking on each item, they are expanded in sub-items. For further details see the previous item “Status provided by DF65 OPC Server”.

With a left click on the mouse button, the user can select which status, and which variable to monitor. The screen below shows a few selected status. To remove some status from the monitor page, just double-click the status or variable in the screen on the left.

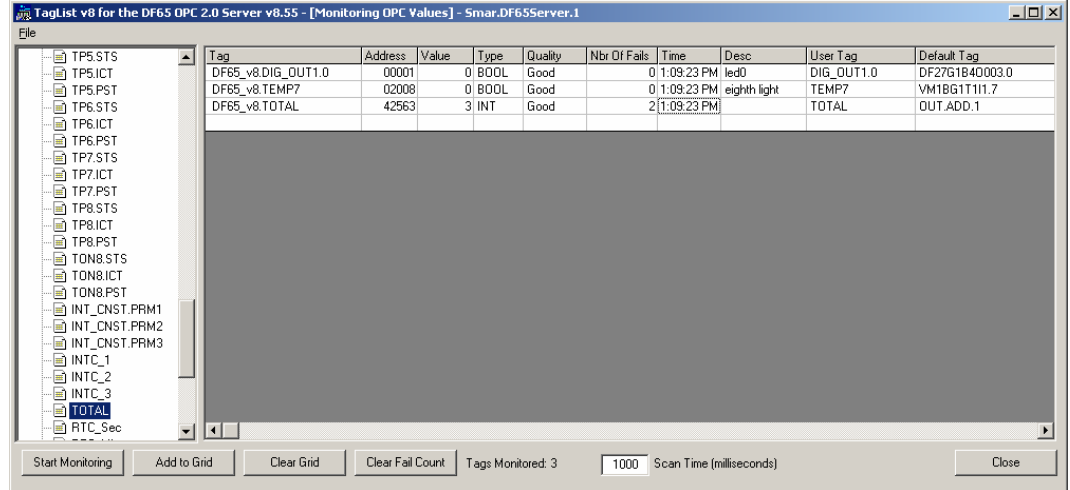


Figure 31- Viewing Status and Tags

The configurations are right below, and can be expanded. The user can choose which variables to monitor directly through this variable’s Tag, without worrying about the MODBUS addresses. The OPC Monitor has some buttons on the lower screen. The “Start Monitoring” button starts the monitoring. “Clear Grid” erases the status selection and variables previously made. “Clear Fail Count” is used during monitoring to erase the failure messages on the communication.

With the "Add to Grid" button the user may select one tag or a group of tags (via Ctrl + left click or left click for mark the first tag and Shift + left click for mark the last tag of a range) and add it to the tags grid that will be monitored, clicking on this button. The “Close” button ends the program.

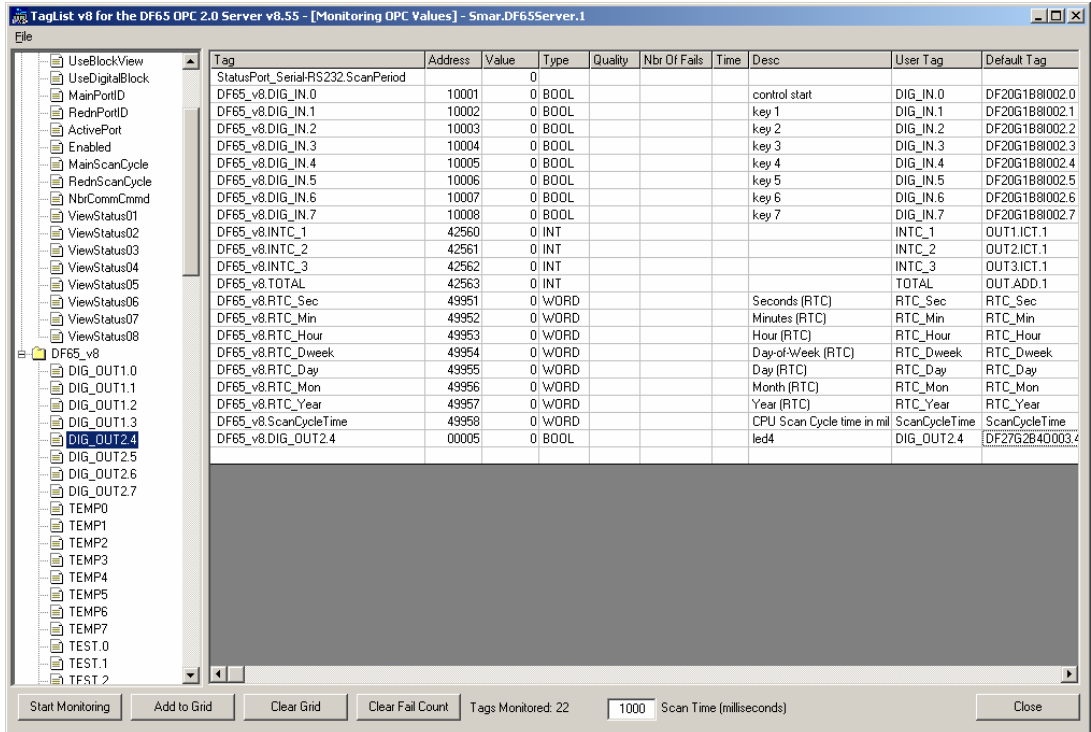


Figure 32- Adding and removing status and variables

To start the monitoring, click on “Start Monitoring”. To end the monitoring, click on “Stop Monitoring”.

Tag	Address	Value	Type	Quality	Nbr Of Fails	Time	Desc	User Tag	Default Tag
StatusPort_Serial-RS232_ScanPeriod		1000		Good	0	9:38:27 PM			
DF65_v8.DIG_IN.0	10001	0	BOOL	Good	0	1:21:20 PM	control start	DIG_IN.0	DF20G1B8I002.0
DF65_v8.DIG_IN.1	10002	0	BOOL	Good	0	1:21:20 PM	key 1	DIG_IN.1	DF20G1B8I002.1
DF65_v8.DIG_IN.2	10003	0	BOOL	Good	0	1:21:20 PM	key 2	DIG_IN.2	DF20G1B8I002.2
DF65_v8.DIG_IN.3	10004	0	BOOL	Good	0	1:21:20 PM	key 3	DIG_IN.3	DF20G1B8I002.3
DF65_v8.DIG_IN.4	10005	0	BOOL	Good	0	1:21:20 PM	key 4	DIG_IN.4	DF20G1B8I002.4
DF65_v8.DIG_IN.5	10006	0	BOOL	Good	0	1:21:20 PM	key 5	DIG_IN.5	DF20G1B8I002.5
DF65_v8.DIG_IN.6	10007	0	BOOL	Good	0	1:21:20 PM	key 6	DIG_IN.6	DF20G1B8I002.6
DF65_v8.DIG_IN.7	10008	0	BOOL	Good	0	1:21:20 PM	key 7	DIG_IN.7	DF20G1B8I002.7
DF65_v8.INTC_1	42560	1	INT	Good	0	1:21:20 PM		INTC_1	OUT11.ICT.1
DF65_v8.INTC_2	42561	2	INT	Good	0	1:21:20 PM		INTC_2	OUT2.ICT.1
DF65_v8.INTC_3	42562	3	INT	Good	0	1:21:20 PM		INTC_3	OUT3.ICT.1
DF65_v8.TOTAL	42563	3	INT	Good	0	1:21:20 PM		TOTAL	OUT.ADD.1
DF65_v8.RTC_Sec	49951	13	WORD	Good	0	1:21:20 PM	Seconds (RTC)	RTC_Sec	RTC_Sec
DF65_v8.RTC_Min	49952	20	WORD	Good	0	1:21:20 PM	Minutes (RTC)	RTC_Min	RTC_Min
DF65_v8.RTC_Hour	49953	10	WORD	Good	0	1:21:20 PM	Hour (RTC)	RTC_Hour	RTC_Hour
DF65_v8.RTC_Dweek	49954	4	WORD	Good	0	1:21:20 PM	Day-of-Week (RTC)	RTC_Dweek	RTC_Dweek
DF65_v8.RTC_Day	49955	1	WORD	Good	0	1:21:20 PM	Day (RTC)	RTC_Day	RTC_Day
DF65_v8.RTC_Mon	49956	6	WORD	Good	0	1:21:20 PM	Month (RTC)	RTC_Mon	RTC_Mon
DF65_v8.RTC_Year	49957	5	WORD	Good	0	1:21:20 PM	Year (RTC)	RTC_Year	RTC_Year
DF65_v8.ScanCycleTime	49958	10	WORD	Good	0	1:21:20 PM	CPU Scan Cycle time in mil	ScanCycleTime	ScanCycleTime
DF65_v8.DIG_OUT2.4	00005	0	BOOL	Good	0	1:21:20 PM	led4	DIG_OUT2.4	DF27G2B4D003.4

Figure 33-Monitoring example of the DF65 OPC Server using OPC Monitor