

# Web Publishing Wizard

smar  
FIRST IN FIELD BUS

JUN / 04  
Web Publishing  
Wizard  
VERSION 7.1



USER'S GUIDE

## WEB PUBLISHING WIZARD

The screenshot shows the 'Web Publishing Utility' dialog box with the following settings:

- Publish Web Page:** DefaultDisplayFeature.htm
- Based on Source File:** C:\Program Files\Smar\ProcessView\Examples\GraphWork\Example ...
- Publishing Options:**
  - Publish to Web Server: http://localhost/webhmi
  - Export Local Copy: C:\Program Files\Smar\ProcessView\Examples\GraphWork\ ...
- Publishing Customization:** Publishing customization allows you to change Web Publishing Settings. [Advanced...]

Buttons: OK, Cancel, Help



# smar



**web: [www.smar.com](http://www.smar.com)**

**Specifications and information are subject to change without notice.  
For the latest updates, please visit the SMAR website above.**

## **BRAZIL**

**Smar Equipamentos Ind. Ltda.**  
Rua Dr. Antonio Furlan Jr., 1028  
Sertãozinho SP 14170-480  
Tel.: +55 16 3946-3510  
Fax: +55 16 3946-3554  
e-mail: [smarinfo@smar.com](mailto:smarinfo@smar.com)

## **GERMANY**

**Smar GmbH**  
Rheingastrasse 9  
55545 Bad Kreuznach  
Germany  
Tel: + 49 671-794680  
Fax: + 49 671-7946829  
e-mail: [infoservice@smar.de](mailto:infoservice@smar.de)

## **USA**

**Smar International Corporation**  
6001 Stonington Street, Suite 100  
Houston, TX 77040  
Tel.: +1 713 849-2021  
Fax: +1 713 849-2022  
e-mail: [sales@smar.com](mailto:sales@smar.com)

## **ARGENTINA**

**Smar Argentina**  
Soldado de La Independencia, 1259  
(1429) Capital Federal – Argentina  
Telefax: 00 (5411) 4776 -1300 / 3131  
e-mail: [smarinfo@smarperifericos.com](mailto:smarinfo@smarperifericos.com)

## **MEXICO**

**Smar México**  
Cerro de las Campanas #3 desp 119  
Col. San Andrés Atenco  
Tlalnepanla Edo. Del Méx - C.P. 54040  
Tel.: +53 78 46 00 al 02  
Fax: +53 78 46 03  
e-mail: [ventas@smar.com](mailto:ventas@smar.com)

## **CHINA**

**Smar China Corp.**  
3 Baishiqiao Road, Suite 30233  
Beijing 100873, P.R.C.  
Tel.: +86 10 6849-8643  
Fax: +86-10-6894-0898  
e-mail: [info@smar.com.cn](mailto:info@smar.com.cn)

## **SINGAPORE**

**Smar Singapore Pte. Ltd.**  
315 Outram Road  
#06-07, Tan Boon Liat Building  
Singapore 169074  
Tel.: +65 6324-0182  
Fax: +65 6324-0183  
e-mail: [info@smar.com.sg](mailto:info@smar.com.sg)

## **FRANCE**

**Smar France S. A. R. L.**  
42, rue du Pavé des Gardes  
F-92370 Chaville  
Tel.: +33 1 41 15-0220  
Fax: +33 1 41 15-0219  
e-mail: [smar.am@wanadoo.fr](mailto:smar.am@wanadoo.fr)

## **Smar Research Corporation**

4250 Veterans Memorial Hwy.  
Suite 156  
Holbrook, NY 11741  
Tel: +1-631-737-3111  
Fax: +1-631-737-3892  
e-mail: [sales@smarresearch.com](mailto:sales@smarresearch.com)

## Index

<b>Introduction to HTML Publishing .....</b>	<b>1</b>
Basic Steps in Publishing GraphWorX Displays.....	1
Delivering the Necessary Web Components to the Client.....	2
Multiple Display Support.....	3
Embedded ActiveX Control Support.....	3
<b>Using the Web Publishing Wizard.....</b>	<b>3</b>
Starting the Web Publishing Wizard .....	3
Exporting a Display File Locally.....	5
Publishing a Display File to a Web Server .....	7
Publishing Customization Options.....	8
Viewing Locally Exported HTML Files.....	10
Viewing Published HTML Files.....	10
<b>Web Publishing in ProjectWorX.....</b>	<b>11</b>
GraphWorX-Based HTML .....	12
Local HTML Files.....	13
Published Documents.....	13
Launching the Web Publishing Wizard in ProjectWorX.....	13
<b>Export and Publish Options in ProjectWorX.....</b>	<b>16</b>
Exporting and Publishing Multiple GraphWorX Display Files in ProjectWorX.....	17
Exporting and Publishing Individual GraphWorX Display Files in ProjectWorX.....	18
Exporting a Display File Locally in ProjectWorX.....	19
Publishing a Display File to a Web Server in ProjectWorX .....	20
Publishing Customization Options.....	21
Publishing Files at a Later Time .....	23
<b>Web Publishing Log.....</b>	<b>24</b>



## Introduction to HTML Publishing

The ProcessView **Web Publishing Wizard** enables you to "export" your GraphWorX (.gdf), TrendWorX (.t32), and AlarmWorX (.a32) displays to HTML files and/or publish the HTML files to a Web server (LAN or Internet). In publishing displays to a Web server, WebHMI uses HTML to reference the files in an Internet-enabled format. Once a display is "exported" to an HTML file and then published to a Web server, client machines can browse it through an Internet browser, such as Microsoft Internet Explorer or Netscape Navigator. Each display can be viewed as a Web page.

**Note:** Netscape Navigator generally does not support ActiveX technology. Smar has solved this problem by supplementing Netscape with a plug-in. Acting as a bridge, this plug-in allows for an ActiveX component to be put into the special Netscape module.

### Basic Steps in Publishing GraphWorX Displays

Publishing a GraphWorX display to HTML involves the following basic steps:

1. Create a GraphWorX display (.gdf) file on a developer workstation with GraphWorX installed.
2. Use the Web Publishing Wizard to generate an HTML file and publish the file to a Web server (URL) address.
3. On the Web server PC (with ProcessView installed), start GenBroker Server from ProcessView Tray.
4. On a client PC, open a Web browser, such as Microsoft Internet Explorer, and browse to the URL address of the HTML file. The client PC downloads the HTML file from the Web server. The Web server delivers all the necessary components (e.g. ActiveX controls) to the client PC's Web browser, which then runs the GraphWorX display directly within the browser. This way you can view the GraphWorX display in real time as a Web page.

The source code of the published HTML file contains references to the required "plug-ins" that are needed to deliver the GraphWorX Viewer ActiveX control to the client. The GraphWorX Viewer ActiveX is needed to run the .gdf file over the network. The GraphWorX display itself is not really "converted" into HTML. Instead the display (.gdf) file is referenced in the HTML code by the ActiveX plug-in.

To expand on step 2 above, the following Microsoft Internet Explorer example shows the portion of the generated HTML source code that references the .gdf file. The **GWXview32.cab** file is referenced in the **codeBase** field to deliver the "plug-in" for the GraphWorX Viewer ActiveX. This in turn opens up the .gdf display. In the example below, the .gdf display file is called **Building1.gdf**, as shown below in the **DisplayName** parameter field.

```
<OBJECT classid=clsid:98A5DDE3-563B-11CF-A343-487C03C10000
codeBase="http://www.myserver.com/webhmi/cabs/GWXview32.cab"
id=GWXview321 style="HEIGHT: 420px; WIDTH: 620px" height=420 width=620>
<param name="_Version" value="65537">
<param name="_ExtentX" value="16404">
<param name="_ExtentY" value="11113">
<param name="_StockProps" value="160">
<param name="BorderStyle" value="1">
<param name="Appearance" value="1">
<param name="DisplayName" value="http://www.myserver.com/webhmi/Building1.gdf">
<param name="UseAmbientBackColor" value="0">
<param name="AutoStartRuntime" value="-1">
<param name="OverrideScrollbarSettings" value="1">
<param name="VerticalScrollbar" value="0">
<param name="HorizontalScrollbar" value="0">
</OBJECT>
```

Exporting a .gdf file to an HTML file not only references the GWXview32.cab file, as shown in the example above, but also references any other "plug-in" .cab files required for other ActiveX components that may be embedded within the .gdf file (e.g., TrendWorX or AlarmWorX Viewer ActiveX controls).

However, before a .gdf file can communicate with live OPC data, the **IcoSetServer.cab** file "plug-in," which is necessary for security and licensing, as well as a **GenBroker configuration (.gbc or .gbx) file**, which contains network configuration settings for OPC communications, must also be delivered to the client PC. The IcoSetServer.cab file and the .gbc or .gbx file are referenced in the HTML source code. This way the security and licensing information are available whenever a

component (such as an Alarm Viewer ActiveX) is downloaded. The sample HTML source code below shows how these files are referenced in the code.

```
<object id="SetServer2" classid="clsid:57802C16-9A15-11D4-B2A8-0090272E599B"
codeBase=http://www.myserver.com/WebHMI/cabs/lcoSetServer.cab height=28 width=17>
  <PARAM NAME="CfgName"
VALUE="http://www.myserver.com/WebHMI/Samples/Default.gbc">
</object>
```

The ProcessView Web Publishing Wizard in GraphWorX takes care of all the necessary HTML code references automatically. Microsoft Internet Explorer uses .cab files, whereas Netscape Navigator uses .dpl files.

**Note:** If you are using multiple frames for your WebHMI pages (e.g. a main "navigation" frame for browsing between pages, and a "content" frame that contains the body of the pages), make sure that the lcoSetServer.cab file and the .gbc or .gbx file are properly referenced in the HTML source code for the main frame. This way the security and licensing information are available whenever a component is downloaded.

## ***Delivering the Necessary Web Components to the Client***

WebHMI is designed to operate with **Zero Install** and **Thin Client** philosophy. This means the client PC has nothing but Windows, Internet Explorer, or Netscape loaded. Thus, all necessary Web components must be remotely delivered and seamlessly installed. The type and number of components required for delivery on the client PC are determined by the content of the GraphWorX displays. For instance, a display with an embedded Trend Viewer requires delivery of the corresponding TrendWorX Viewer ActiveX Web component, but not the AlarmWorX Viewer ActiveX. On the other hand, a display with an embedded Alarm Viewer requires the corresponding AlarmWorX Viewer ActiveX but not the TrendWorX Viewer ActiveX.

The delivery process can be very slow in terms of network speed. To avoid wasting time, the first requirement is to deliver only the required component. The delivery process is strictly connected to the HTML code. Inside the HTML code, there are references to .dpl files or .cab files, the basic ways to deliver components. As a result, the building of the HTML page is a critical step. The Web Publishing Wizard looks inside the display to understand what components are needed on the client side and then builds the corresponding HTML code.

Netscape Navigator and Microsoft Internet Explorer neither process the HTML code in the same way nor deliver the component in the same standard format. Basically, Microsoft Internet Explorer requires components to be delivered using .cab file technology whereas Netscape Navigator requires .dpl files.

### **Client Station Requirement**

In order to view a published GraphWorX display, a client PC must have a Web browser installed (e.g. Microsoft Internet Explorer or Netscape Navigator).

### **Developer Station Requirement**

The developer station requires GraphWorX Version 6.1 or greater.

### **Web Server Station Requirement**

The Web server PC must have the following installed:

- WebHMI
- ProcessView (with GenBroker)
- For Windows NT, Internet Information Server (IIS) or a Personal Web Server
- For Windows 2000 and Windows XP, Internet Information Server (IIS)

## Multiple Display Support

Suppose that you have a main GraphWorX display (.gdf) file that is linked to other display files (e.g. each display contains pick actions, such as Load Display or Pop-up Window, that point to the other display files). When you publish the main display to an HTML file, you want all the links and references to the other dependent display files to be functional when the HTML file is downloaded to a client Web browser. The Web Publishing Wizard makes this possible by detecting all mutually linked display files, looping through all dynamic actions, and checking for pick actions in which a file name is specified as one of its parameters. The following pick actions are supported for multiple GraphWorX display Web publishing support:

- Load Display
- Embedded Window
- Popup Window
- Drag/Drop Load
- Set Aliases
- Alias Dialog (alias files specified through the **Set Aliases** dialog box in GraphWorX).

The LoadTabs display property is also supported for publishing multiple GraphWorX displays.

## Embedded ActiveX Control Support

In dealing with a main GraphWorX display (.gdf) file that is linked to other display files (as described in the "Multiple Display Support" section above), suppose you included an ActiveX Control (e.g. Alarm Viewer ActiveX or Trend Viewer ActiveX) into each of the dependent display files. Also suppose that you generated and published an HTML file only from the main display, but you want this single HTML file to trigger the simultaneous download and installation of all ActiveX Controls embedded within all interlinked GraphWorX display files. The Web Publishing Wizard's embedded ActiveX Control support makes this possible, allowing you to view the ActiveX Controls in all displays from a single client Web browser.

## Using the Web Publishing Wizard

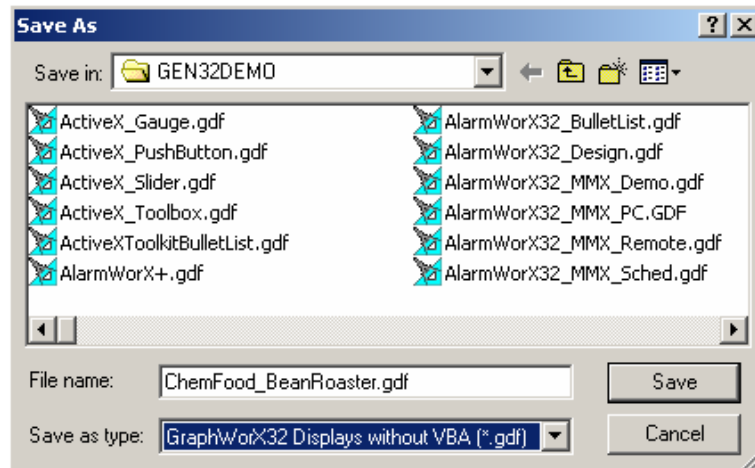
The Web Publishing Wizard performs two basic operations:

1. The Wizard creates an HTML file based on a user-specified GraphWorX display (.gdf) file, TrendWorX display (.t32) file, or AlarmWorX display (.a32) file.
2. The Wizard then either "exports" (saves) the HTML file to a user-specified directory on the local drive and/or "publishes" (uploads) the HTML file to a user-specified Web server URL address (i.e. over the Internet or an intranet).

## Starting the Web Publishing Wizard

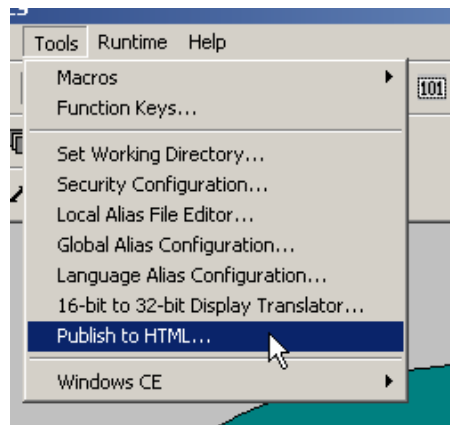
To launch the Web Publishing Wizard in GraphWorX:

1. Load or create a GraphWorX display (.gdf) file.
2. After you have either created a new display file or opened an existing file, select **Save As** from the **File** menu. The **Save As** dialog box opens, allowing you to specify the name and location of the file you are about to save. Type a name for the new file in the **File Name** field. It is important that, when saving your file, you select "GraphWorX Displays without VBA (\*.gdf)" in the **Save as Type** field, as shown in the figure below, because the Web Publishing Wizard does not support Microsoft Visual Basic for Applications (VBA). Click the **Save** button to save the current file.



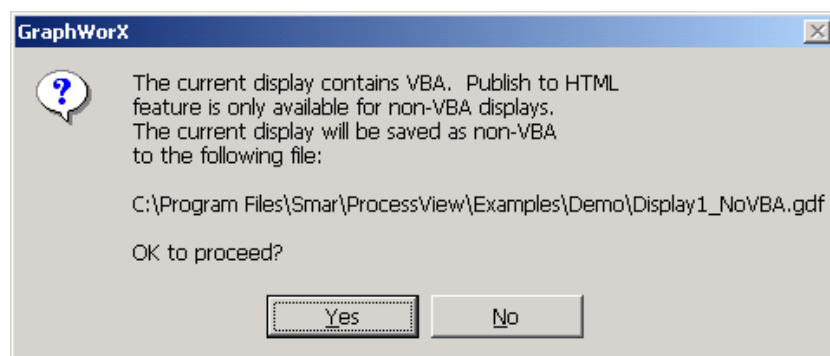
#### ***Saving the Display As a Non-VBA File***

3. Select **Publish to HTML** from the **Tools** menu, as shown in the figure below.



#### ***Starting the Web Publishing Wizard in GraphWorX***

**Note:** If you try to run the Web Publishing Wizard with a GraphWorX display with VBA, you will get a warning message as shown in the figure below. If you click **Yes**, the Web Publishing Wizard automatically saves the display as a non-VBA file. If you click **No**, the publishing operation is cancelled.

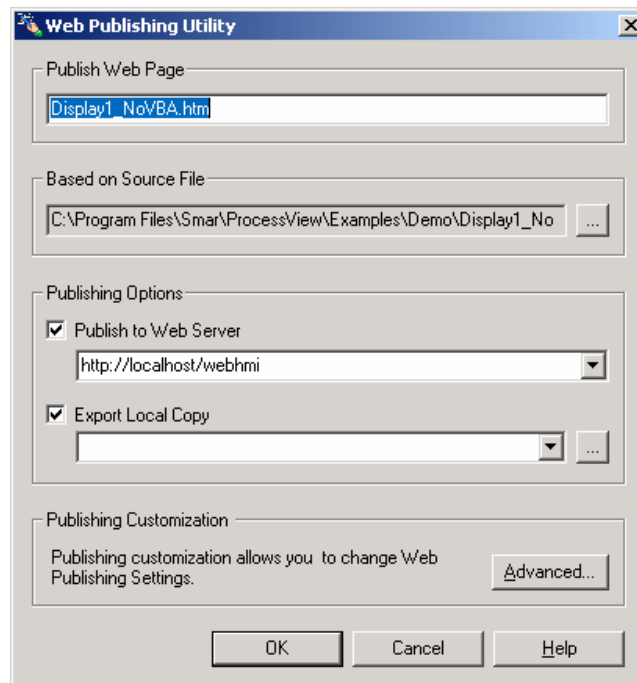


#### ***Warning Message About Displays With VBA***

4. This launches the **Web Publishing Wizard** configuration dialog box, as shown in the figure below. This dialog box serves as the interface through which you export/publish GraphWorX display files to the Web.



**Note:** Both the **Publish to Web Server** and **Export Local Copy** actions can be performed at the same time.

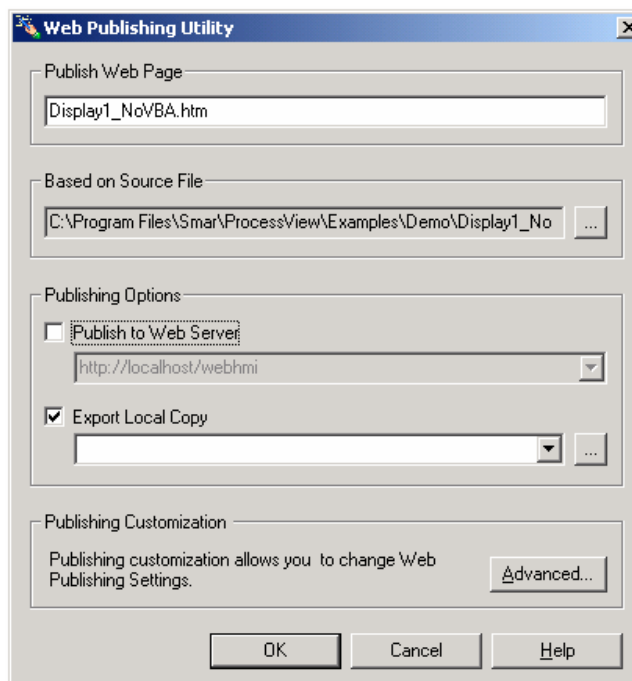


**Web Publishing Wizard Dialog Box**

## Exporting a Display File Locally

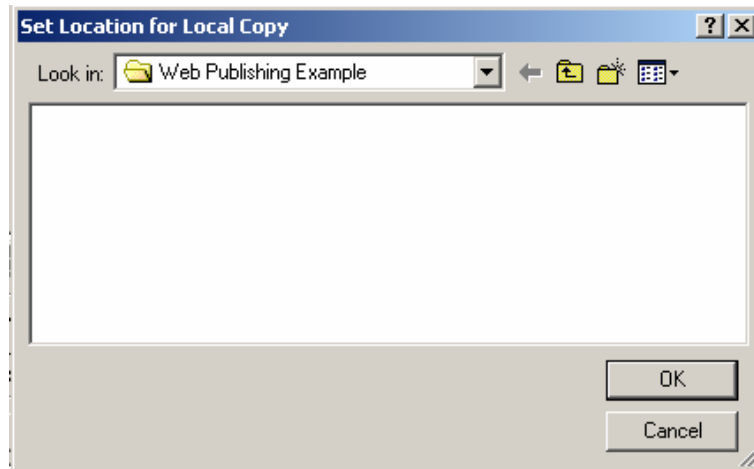
To export a GraphWorX display to a directory on the local drive:

1. In the **Based on Source File** field of the Web Publishing Wizard, you must specify the name of the GraphWorX display (.gdf) file to be exported, as shown in the figure below. To choose a different display, click the ... button to the right to browse for a file. Select a file and then click **Open**. The directory path and the file name are shown in the text field.



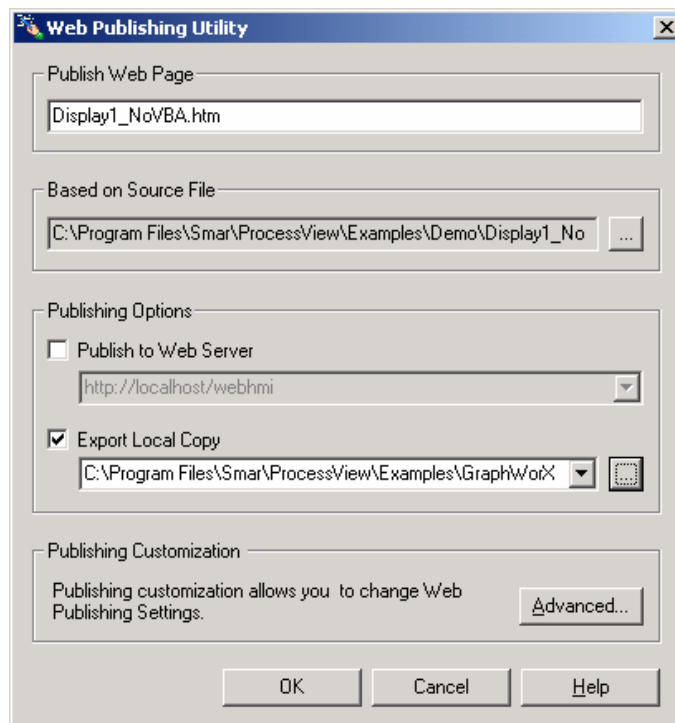
**Specifying a GraphWorX Display File**

- In the **Publish Web Page** field of the Web Publishing Wizard, specify the name of the HTML file that will be created. The .gdf file name is filled in by default, but you can give the HTML file a different name.
- In the **Publishing Options** field, check the **Export Local Copy** check box and specify the local directory path name to which you want to export the HTML file. You can select a recently used path from the drop-down list, or click the ... button to browse for a destination directory, as shown in the figure below. Select the directory and click **OK**.



**Setting the Local Directory**

- The local directory pathway you selected appears in the **Export Local Copy** field of the Web Publishing Wizard, as shown in the figure below.



**Export Local Copy Pathway Shown in the Wizard**

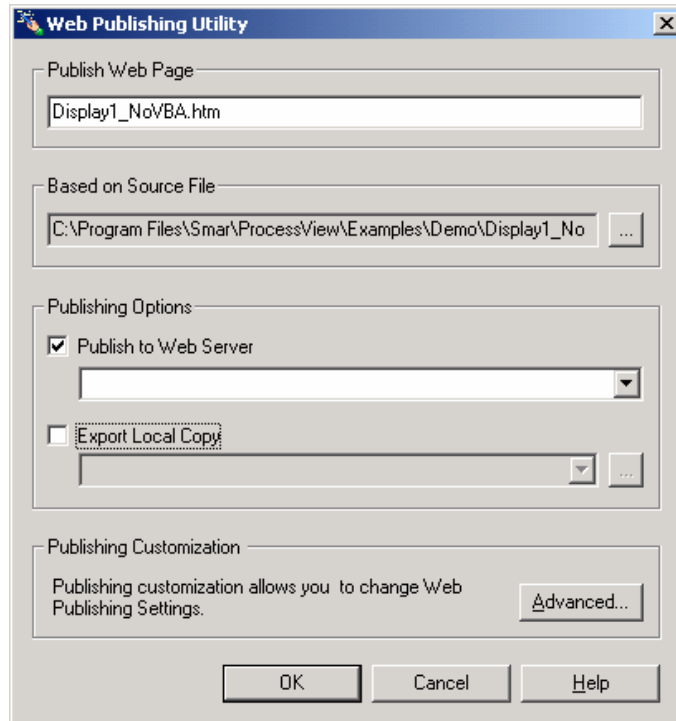
- Click the **OK** button to generate the HTML file. The new HTML file is saved to the local directory pathway specified in the **Export Local Copy** field.

**Note:** Both the **Publish to Web Server** and **Export Local Copy** actions can be performed at the same time.

## Publishing a Display File to a Web Server

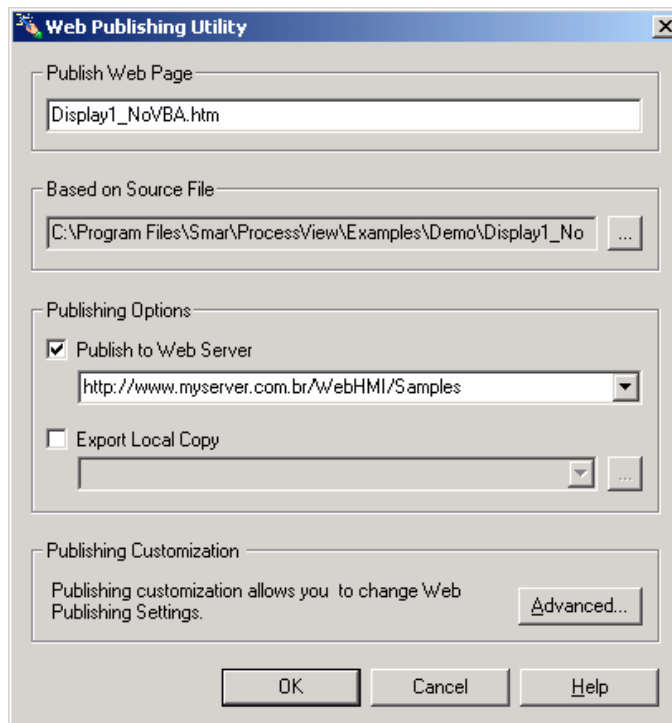
To publish the HTML file to a directory on a Web server (i.e. over the Internet or an intranet):

1. In the **Based on Source File** field of the Web Publishing Wizard, you must specify the name of the GraphWorX display (.gdf) file to be published, as shown in the figure below. To choose a different display, click the ... button to the right to browse for a file. Select a file and then click **Open**. The directory path and the file name are shown in the text field.



### Specifying a GraphWorX Display File

2. In the **Publish Web Page** field of the Web Publishing Wizard, specify the name of the HTML file that will be created. The .gdf file name is filled in by default, but you can give the HTML file a different name.
3. In the **Publishing Options** field, check the **Publish to Web Server** check box and type in the URL address of your Web server with the complete directory indicating where you want to publish the HTML file, as shown in the figure below. In the sample Web server URL address shown below ("http://www.myserver.com/WebHMI/Samples"), the various components are:
  - **http://www.myserver.com:** IP address (server name) of the WebHMI Server
  - **WebHMI:** Name of the WebHMI server root directory
  - **Samples:** Name of the directory on the server to which the HTML file will be saved
4. The Web server URL address now appears in the Web Publishing Wizard dialog box in the **Publish to Web Server** field of the Web Publishing Wizard, as shown in the figure below.



**Publish to Web Server Location Specified in Web Publishing Wizard**

5. Click the **OK** button to generate the HTML file. The new HTML file is uploaded to the Web server and then saved to the URL address path specified in the **Publish to Web Server** field.

**Note:** Both the **Publish to Web Server** and **Export Local Copy** actions can be performed at the same time.

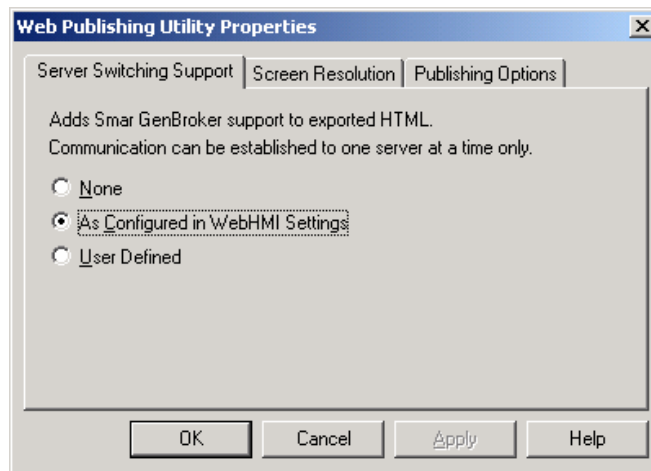
## Publishing Customization Options

The Web Publishing Wizard contains some customization options for exporting/publishing HTML files. Clicking the **Advanced** button on the Web Publishing Wizard dialog opens the **Web Publishing Properties** dialog box, as shown in the figure below, which contains the following tabs:

- Server Switching Support
- Screen Resolution Settings
- Publishing Options

## Server Switching Support

The **Server Switching Support** tab of the **Web Publishing Properties** dialog box, shown in the figure below, allows you to enable or disable GenBroker support for the exported/published HTML file. Here you can specify which GenBroker configuration file (.gbc or .gbx) will be activated. The GenBroker configuration file establishes the settings for OPC data communications between the clients and the Web server.



### Server Switching Support Settings

There are three available options for GenBroker support:

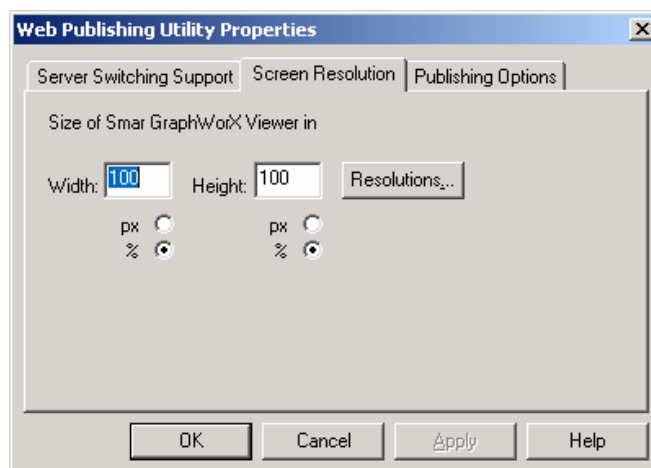
- **None:** GenBroker support is not active.
- **As Configured in WebHMI Settings:** This setting uses the default URL address of the GenBroker configuration (.gbc or .gbx) file as specified in the WebHMI installation.
- **User Defined:** When this option is selected, the **GenBroker Configuration File URL** field becomes available, allowing you to specify the URL address of the GenBroker configuration (.gbc or .gbx) file.

Clients can receive data from different WebHMI servers, but communication can be established only to one server at a time. The server to which a client connects depends on the type of information that the client requests. If Server A, for example, does not contain the components necessary to answer the client's request, the request will be forwarded to Server B, or Server C, and so on.

**Note:** For information about configuring GenBroker settings, please see the GenBroker Configurator Help documentation.

## Screen Resolution Settings

The **Screen Resolution** tab of the **Web Publishing Properties** dialog box, shown in the figure below, determines the screen resolution and size of the GraphWorX Viewer ActiveX control, which is referenced in the generated HTML file and then downloaded to a client PC when the HTML file is viewed in the client's Web browser. You can specify the screen size in the **Width** and **Height** fields in terms of pixels (px) or percentage (%). Click the **Resolutions** button to select from a pop-up menu of standard screen resolutions, as shown in the figure below.

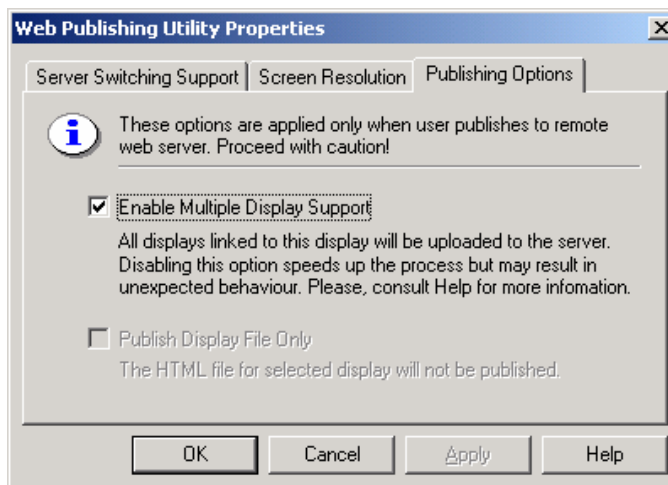


### Screen Resolution Settings

## Publishing Options

The **Publishing Options** tab of the **Web Publishing Properties** dialog box, shown in the figure below, enhances the publishing process. By default, the Web Publishing Wizard provides support for related files detection (for more details, see the **Multiple Display Support** section). The multiple display detection could be a rather lengthy process. You can speed up the process by disabling the **Enable Multiple Display Support** option. This is especially useful, if you have already published your project files to the Web server, and now you want to update display you have changed.

The multiple display detection mechanism ensures that the Web page will be published properly for the source file. Disabling the **Multiple Display Support** may cause publishing of an incomplete web page, which may result in unexpected behavior. Therefore, it is suggested to disallow publishing of the Web page. You can do so by enabling the **Publish Display File Only** option.



*Publishing Options*

## Viewing Locally Exported HTML Files

To view an HTML file that was exported to a local directory, simply browse to the local directory pathway and click on the file to open it in your Web browser. You can also open your Web browser and copy the directory pathway of the file into the **Address** field of the Web browser, as shown in the figure below. A complete directory path is, for example, "C:\Documents and Settings\Administrator\My Documents\Web Publishing Example\ChemFood\_BeanRoaster.htm." Be sure to include the name of the HTML file that you have exported and the file extension ".htm."

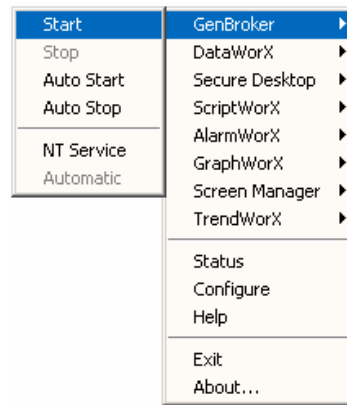


*Viewing the Exported HTML File in a Web Browser*

## Viewing Published HTML Files

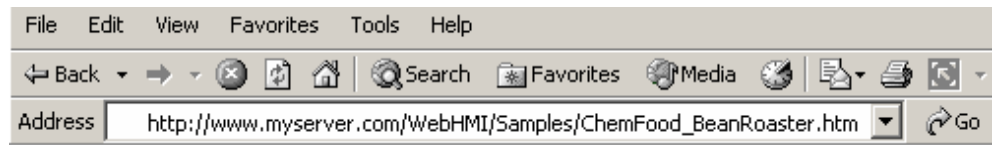
Before a published HTML file can be downloaded from a WebHMI server, you must set GenBroker active on the WebHMI server node using ProcViewTray:

1. Launch ProcViewTray from the Windows **Start** menu by selecting **Programs > Smart ProcessView > Tools > ProcessView Tray**.
2. When ProcViewTray opens, the triangle icon will appear in the Windows tool tray. Click on the triangle and select **GenBroker > Start** from the pop-up menu, as shown in the figure below. This activates the GenBroker Server.



**Starting the GenBroker Server on the Server Node**

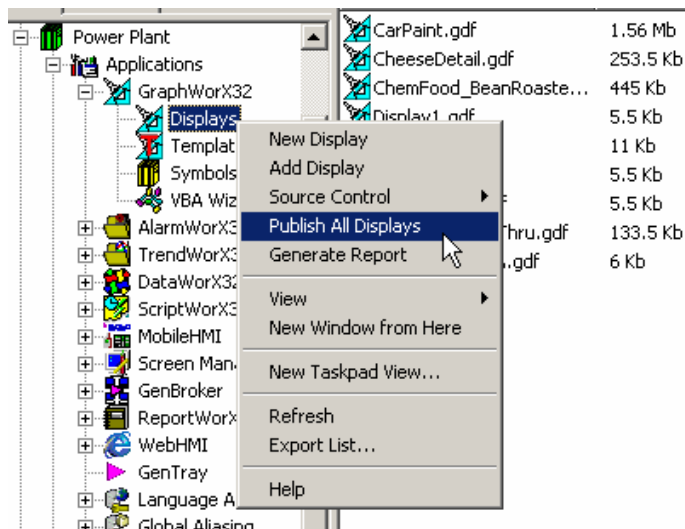
3. Once the GenBroker Server is running, you can view the HTML file that you have published to the Web server from any client PC's Web browser. To view the published HTML file, open your Web browser and copy the URL address of the file into the **Address** field of the Web browser, as shown in the figure below. A complete address is, for example, "http://www.myserver.com/webhmi/Samples/ChemFood\_BeanRoaster.htm." Be sure to include the name of the HTML file that you have published and the ".htm" file extension. The GraphWorX display file is referenced in the HTML code so the display can be viewed as a Web page. The client's Web browser simply downloads the HTML file in which the .gdf file is referenced. All the client needs is a Web browser; it is not necessary to have ProcessView installed on client. The Web page is downloaded from the Web server across the Internet/intranet and appears in the client's Web browser window. The display is real-time, just as if you were viewing the runtime display in GraphWorX on the server machine; the OPC tag values change dynamically in the display.



**Viewing the Published HTML File in a Client Web Browser**

**Web Publishing in ProjectWorX**

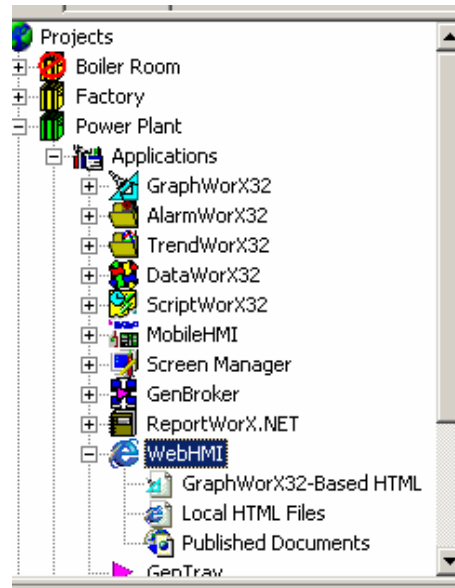
The Web Publishing Wizard can be accessed through ProjectWorX console, allowing you to easily export/publish one or more GraphWorX display files within a project to a Web server. As shown in the figure below, the **Applications/GraphWorX/Displays** tree of each project includes an option to publish a single display or multiple displays in the project.



**Publishing GraphWorX Displays From the ProjectWorX Console**

The **WebHMI** tree under the **Applications** tree for each project in the ProjectWorX console, shown in the figure below, manages Web publishing for the entire project. From here you can right-click and publish HTML files to a Web server. The WebHMI tree includes the following three categories:

- GraphWorX-Based HTML
- Local HTML Files
- Published Documents



**WebHMI Tree in ProjectWorX Console**

### **GraphWorX-Based HTML**

The **GraphWorX-Based HTML** subtree of the WebHMI tree, shown in the figure below, contains HTML files generated from exported GraphWorX displays. These HTML files have embedded code for accommodating a GraphWorX Viewer ActiveX Control. Any requested local copy of a GraphWorX-based HTML file generated from the Web Publishing Wizard is stored in this folder. (See the “Web Publishing Wizard” section below for more information on exporting and publishing HTML files from GraphWorX displays.) The ProjectWorX database maintains a record of which local GraphWorX display (.gdf) files each of these HTML files depends on. Documents in this folder can be added, removed, copied, pasted, opened, edited, added to Microsoft Visual SourceSafe, searched, replaced, and packed the same way items from other categories can.

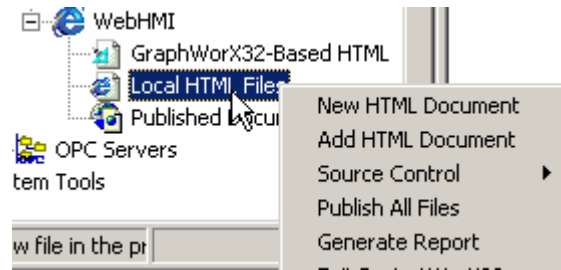


**GraphWorX-Based HTML Subtree**



## Local HTML Files

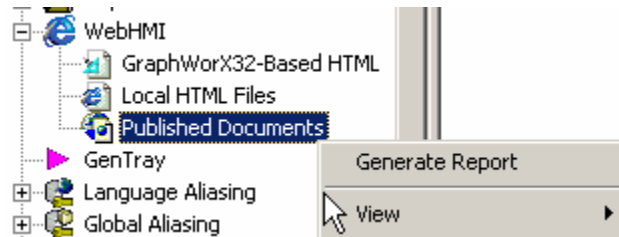
The **Local HTML Files** subtree of the WebHMI tree stores basic HTML files that were not generated from the Web Publishing Wizard. Here you can add, delete, edit, and maintain various HTML files.



**Local HTML Files Subtree**

## Published Documents

The **Published Documents** subtree of the WebHMI tree, shown in the figure below, maintains a list of all HTML files that have been exported/published from ProjectWorX.



**Published Documents Subtree**

In the right-hand pane of the ProjectWorX Console, each item is listed as a URL with the date it was published, as shown in the figure below. For information about publishing files from ProjectWorX, please see "Using the Web Publishing Wizard."

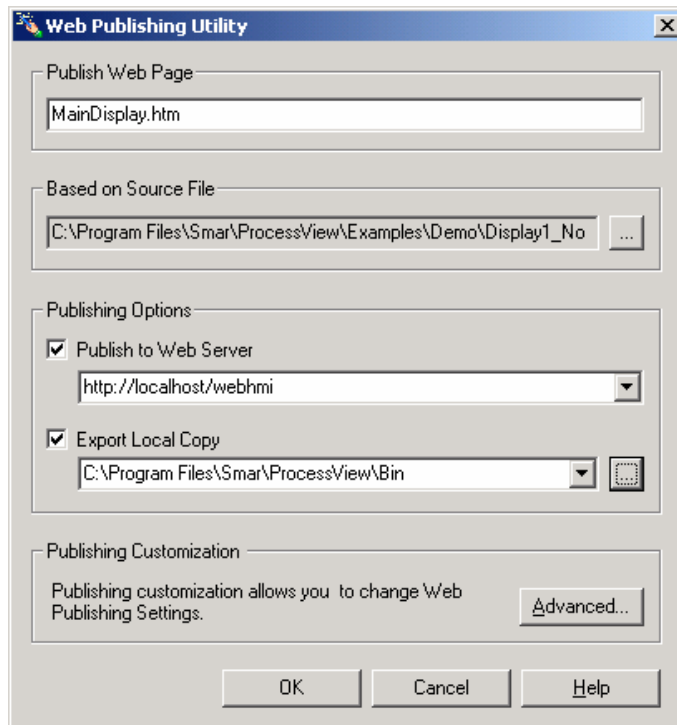
URL	Publish Date
http://www.webhmi.com/backup/webHMI/testActiveX.html	7/5/2002 6:34:...
http://www.webhmi.com/backup/webHMI/NewFile.htm	7/5/2002 6:50:...
http://www.webhmi.com/backup2/webHMI/NewFile.htm	7/5/2002 6:50:...
http://world/Publish_test/LinkTest2.gdf.htm	7/9/2002 10:40...

**List of All Documents Published From ProjectWorX**

## Launching the Web Publishing Wizard in ProjectWorX

The Web Publishing Wizard in ProjectWorX performs two basic operations:

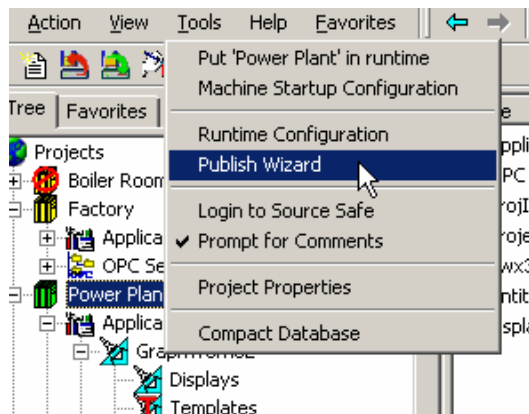
1. The Wizard creates HTML files based user-specified GraphWorX display (.gdf) files.
2. The Wizard then either "exports" (saves) the HTML files to a user-specified directory on the local drive and/ or "publishes" (uploads) the HTML file to a user-specified Web server URL address (i.e. over the Internet or an intranet).



**Web Publishing Wizard in ProjectWorX Console**

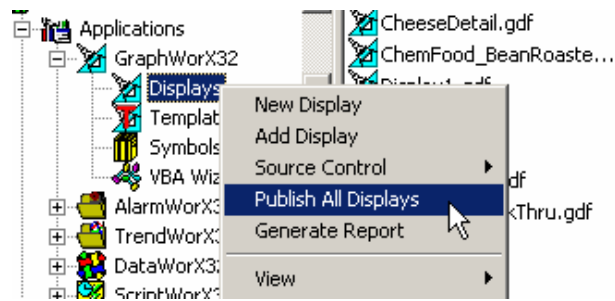
You can open the Web Publishing Wizard dialog from the ProjectWorX console in the following ways:

- Select the project root and then choose **Publish Wizard** from the **Tools** menu, as shown in the figure below. In this case, both the **Publish Web Page** field and the **Based on Source File** field in the Web Publishing Wizard dialog are read-only and contain the text “(Display Name).htm” and “(All GraphWorX Displays in Project),” respectively. The browse (...) button is also disabled.



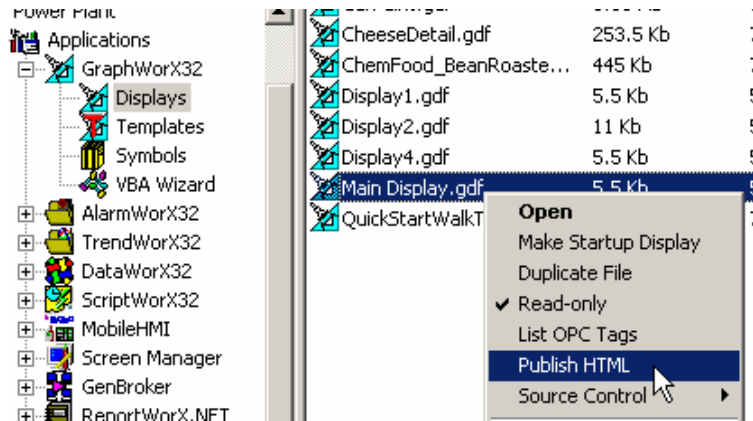
**Opening the Publishing Wizard From the Tools Menu**

- Right-click on the **Applications/GraphWorX/Displays** tree and select **Publish All Displays**, as shown in the figure below. In this case, both the **Publish Web Page** field and the **Based on Source File** field in the Web Publishing Wizard dialog are read-only and contain the text “(Display Name).htm” and “(All GraphWorX Displays in Project),” respectively. The browse (...) button is also disabled.



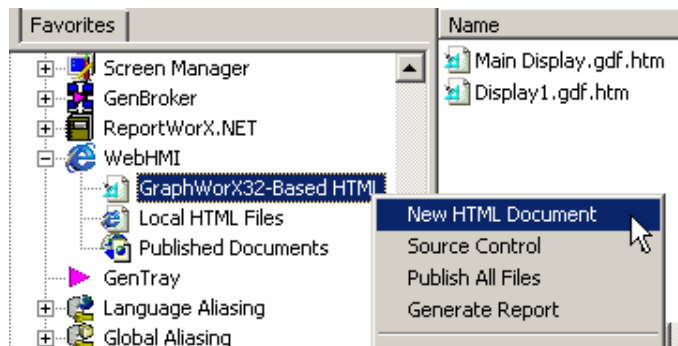
**Publishing All GraphWorX Displays in a Project**

- Right-click on a GraphWorX display and select **Publish HTML**, as shown in the figure below. In this case, the **Based on Source** field in the Web Publishing Wizard dialog is read-only and contains the name of the selected GraphWorX display. The browse (...) button is also disabled.



**Publishing a GraphWorX Display File**

- Right-click on the **Applications/WebHMI/GraphWorX-Based HTML** tree and select **New HTML Document**, as shown in the figure below. In this case, you need to specify a GraphWorX display file in the **Based on Source File** field by browsing for the file or by typing in the file name. You also need to specify the name of the new HTML file in the **Publish Web Page** field.



**Creating a New HTML File in a Project**

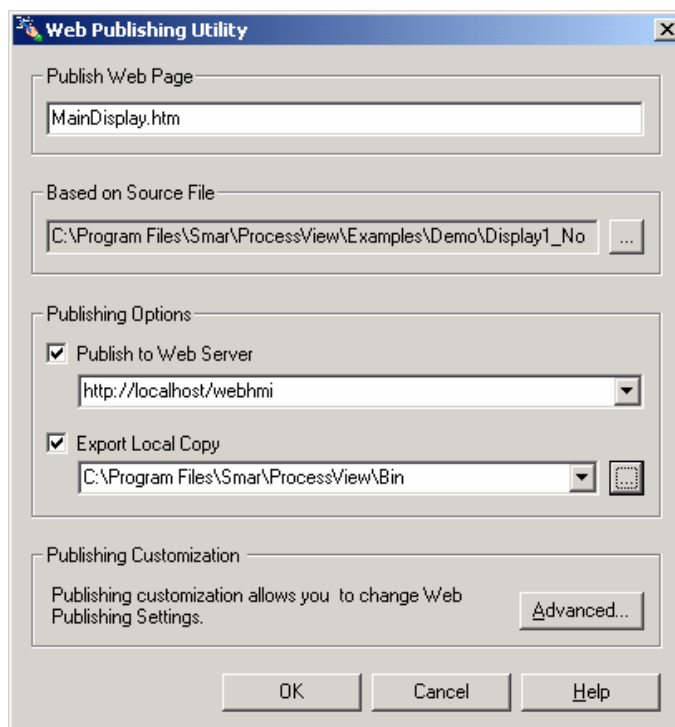
## Export and Publish Options in ProjectWorX

The Web Publishing Wizard in the ProjectWorX console, shown in the figure below, generates an HTML file based on one or more user-specified GraphWorX display (.gdf) files. Then the Wizard either "exports" (saves) the HTML file to a user-specified directory on the local drive or "publishes" (uploads) the HTML file to a user-specified Web server URL address (i.e. over the Internet or an intranet).

You have the following options when using the Web Publishing Wizard for a project:

- Export and/or publish all GraphWorX display files in the project.
- Export and/or publish a single GraphWorX display file in the project.
- Export a display file locally
- Publish a display file to a Web server.

**Note:** Both the **Publish to Web Server** and **Export Local Copy** actions can be performed at the same time.



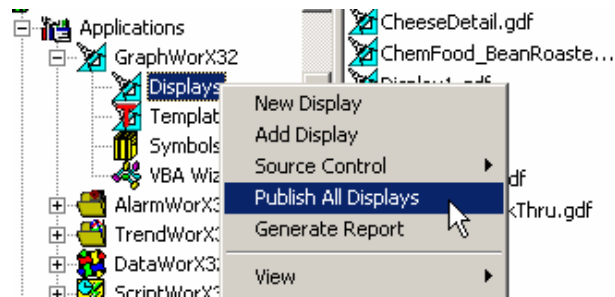
**Web Publishing Wizard in ProjectWorX Console**

## Exporting and Publishing Multiple GraphWorX Display Files in ProjectWorX

In ProjectWorX, you can export and/or publish multiple GraphWorX display files using the Web Publishing Wizard.

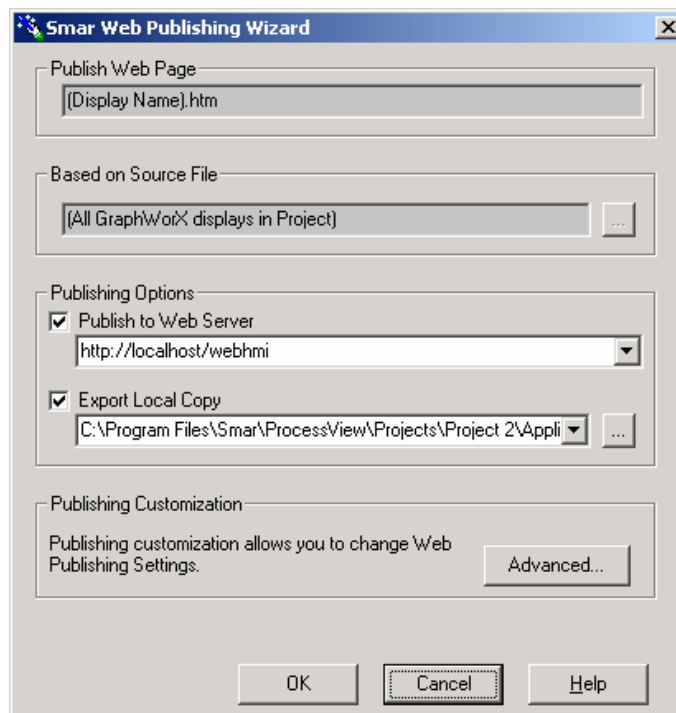
To export/publish all displays in a project:

1. Select the project root and then choose **Publish Wizard** from the **Tools** menu, or right-click on the **Applications/GraphWorX/Displays** tree and select **Publish All Displays**, as shown in the figure below.



### Launching the Web Publishing Wizard

2. This launches the Web Publishing Wizard, as shown in the figure below. In this case, both the **Publish Web Page** field and the **Based on Source File** field in the Web Publishing Wizard dialog are read-only and contain the text "(Display Name).htm" and "(All GraphWorX Displays in Project)," respectively. The browse (...) button is also disabled.



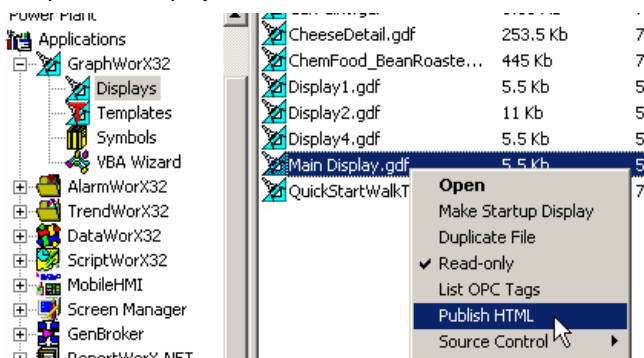
### Publishing All GraphWorX Displays in a Project

## Exporting and Publishing Individual GraphWorX Display Files in ProjectWorX

In ProjectWorX, you can export and/or publish individual GraphWorX display files using the Web Publishing Wizard.

To export/publish a single display in a project:

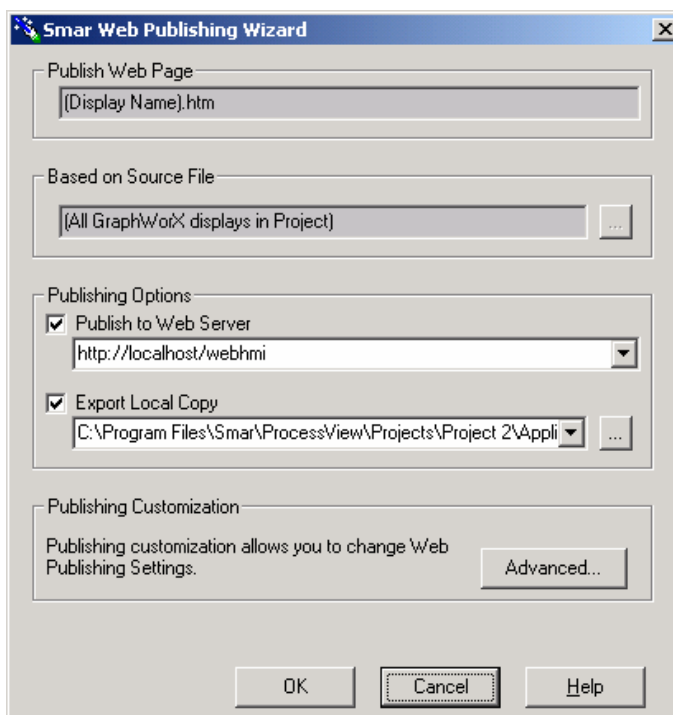
1. Right-click on a GraphWorX display and select **Publish HTML**, as shown in the figure below.



**Launching the Web Publishing Wizard**

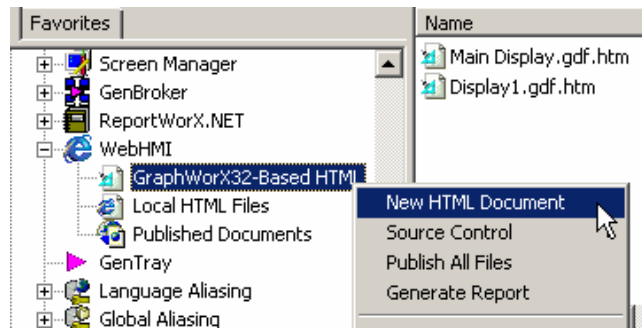
2. This launches the Web Publishing Wizard, as shown in the figure below. In this case, the **Based on Source File** field in the Web Publishing Wizard dialog is read-only and contains the name of the selected GraphWorX display. The browse (...) button is also disabled.

3. In the **Publish Web Page** field of the Web Publishing Wizard, specify the name of the HTML file that will be created. The .gdf file name is filled in by default, but you can give the HTML file a different name.



**Publishing a GraphWorX Display in a Project**

**Note:** You can also right-click on the **Applications/WebHMI/GraphWorX-Based HTML** tree and select **New HTML Document**, as shown in the figure below, to export/publish a GraphWorX display. This launches the Web Publishing Wizard. In this case, you need to specify a GraphWorX display file in the **Based on Source File** field by browsing for the file or by typing in the file name. You also need to specify the name of the new HTML file in the **Publish Web Page** field.

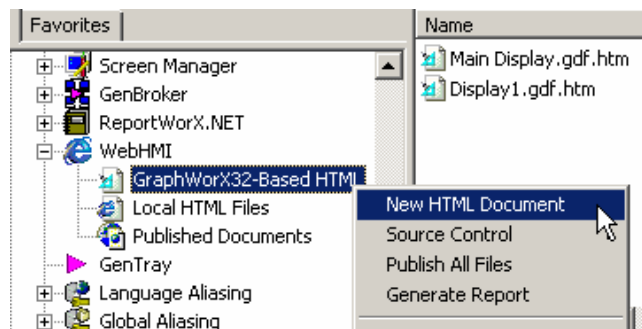


**Creating a New HTML File in a Project**

## Exporting a Display File Locally in ProjectWorX

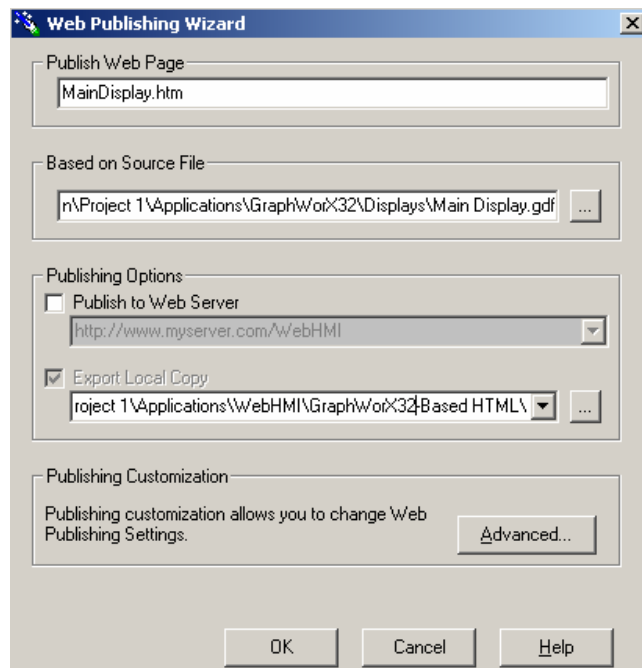
To export a GraphWorX display to a directory on the local drive:

1. Right-click on the **Applications/WebHMI/GraphWorX-Based HTML** tree and select **New HTML Document**, as shown in the figure below.



**Launching the Web Publishing Wizard**

2. This launches the Web Publishing Wizard, as shown in the figure below. In the **Based on Source File** field of the Web Publishing Wizard, you must specify the name of the GraphWorX display (.gdf) file to be exported, as shown in the figure below. To choose a display, click the ... button to the right to browse for a file. Select a file and then click **Open**. The directory path and the file name are shown in the text field.



**Exporting a Display File Locally in ProjectWorX**

3. In the **Publish Web Page** field of the Web Publishing Wizard, specify the name of the HTML file that will be created.
4. In the **Publishing Options** field, the **Export Local Copy** check box is checked by default. Specify the local directory path name to which you want to export the HTML file. You can select a recently used path from the drop-down list, or click the ... button to browse for a destination directory. Select the directory and click **OK**. The local directory pathway you selected appears in the **Export Local Copy** field of the Web Publishing Wizard.

**Note:** By default, ProjectWorX saves the HTML file to the (local) **Applications/WebHMI/GraphWorX-Based HTML** tree. From there, the HTML file can be edited and published again in the future.

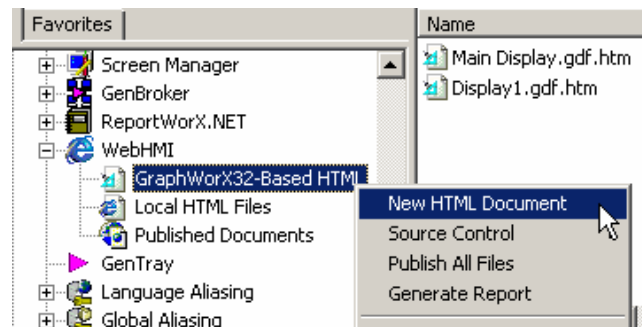
5. Click the **OK** button to generate the HTML file. The new HTML file is saved to the local directory pathway specified in the **Export Local Copy** field.

**Note:** Both the **Publish to Web Server** and **Export Local Copy** actions can be performed at the same time.

### ***Publishing a Display File to a Web Server in ProjectWorX***

To publish the HTML file to a directory on a Web server (i.e. over the Internet or an intranet):

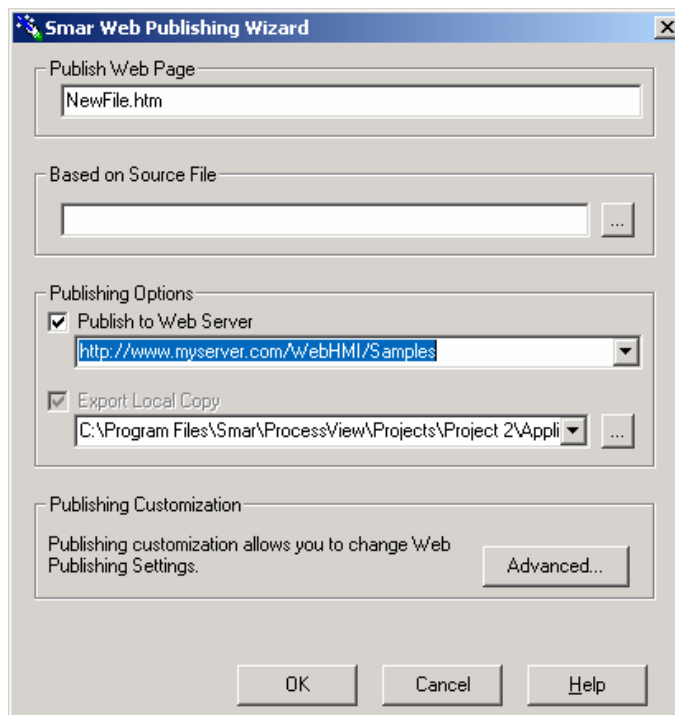
1. Right-click on the **Applications/WebHMI/GraphWorX-Based HTML** tree and select **New HTML Document**, as shown in the figure below.



***Launching the Web Publishing Wizard***

2. This launches the Web Publishing Wizard, as shown in the figure below. In the **Based on Source File** field of the Web Publishing Wizard, you must specify the name of the GraphWorX display (.gdf) file to be published, as shown in the figure below. To choose a display, click the ... button to the right to browse for a file. Select a file and then click **Open**. The directory path and the file name are shown in the text field.





#### *Publishing a Display File to a Web Server*

3. In the **Publish Web Page** field of the Web Publishing Wizard, specify the name of the HTML file that will be created.
4. In the **Publishing Options** field, check the **Publish to Web Server** check box and type in the URL address of your Web server with the complete directory indicating where you want to publish the HTML file, as shown in the figure above. In the sample Web server URL address shown above ("http://www.myserver.com/WebHMI/Samples"), the various components are:
  - **http://www.myserver.com:** IP address (server name) of the WebHMI Server
  - **WebHMI:** Name of the WebHMI server root directory
  - **Samples:** Name of the directory on the server to which the HTML file will be saved
5. Click the **OK** button to generate the HTML file. The new HTML file is uploaded to the Web server and then saved to the URL address path specified in the **Publish to Web Server** field.

**Note:** By default, ProjectWorX also saves the HTML file to the (local) **Applications/WebHMI/GraphWorX-Based HTML** tree. From there, the HTML file can be edited and published again in the future.

**Note:** Both the **Publish to Web Server** and **Export Local Copy** actions can be performed at the same time.

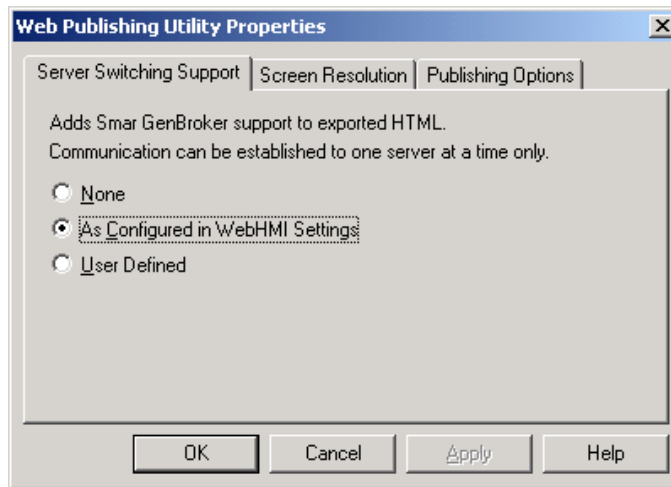
### **Publishing Customization Options**

The Web Publishing Wizard contains some customization options for exporting/publishing HTML files. Clicking the **Advanced** button on the Web Publishing Wizard dialog opens the **Web Publishing Properties** dialog box, which contains the following tabs:

- Server Switching Support
- Screen Resolution Settings
- Publishing Options

#### **Server Switching Support**

The **Server Switching Support** tab of the **Web Publishing Properties** dialog box, shown in the figure below, allows you to enable or disable GenBroker support for the exported/published HTML file. Here you can specify which GenBroker configuration file (.gbc or .gbx) will be activated. The GenBroker configuration file establishes the settings for OPC data communications between the clients and the Web server.



### Server Switching Support Settings

There are three available options for GenBroker support:

- **None:** GenBroker support is not active.
- **As Configured in WebHMI Settings:** This setting uses the default URL address of the GenBroker configuration (.gbc) file as specified in the WebHMI installation.
- **User Defined:** When this option is selected, the **GenBroker Configuration File URL** field becomes available, allowing you to specify the URL address of the GenBroker configuration (.gbc or .gbx) file.

Clients can receive data from different WebHMI servers, but communication can be established only to one server at a time. The server to which a client connects depends on the type of information that the client requests. If Server A, for example, does not contain the components necessary to answer the client's request, the request will be forwarded to Server B, or Server C, and so on.

**Note:** For information about configuring GenBroker settings, please see the GenBroker Configurator Help documentation.

## Screen Resolution Settings

The **Screen Resolution** tab of the **Web Publishing Properties** dialog box, shown in the figure below, determines the screen resolution and size of the GraphWorX Viewer ActiveX control, which is referenced in the generated HTML file and then downloaded to a client PC when the HTML file is viewed in the client's Web browser. You can specify the screen size in the **Width** and **Height** fields in terms of pixels (px) or percentage (%). Click the **Resolutions...** button to select from a pop-up menu of standard screen resolutions, as shown in the figure below.

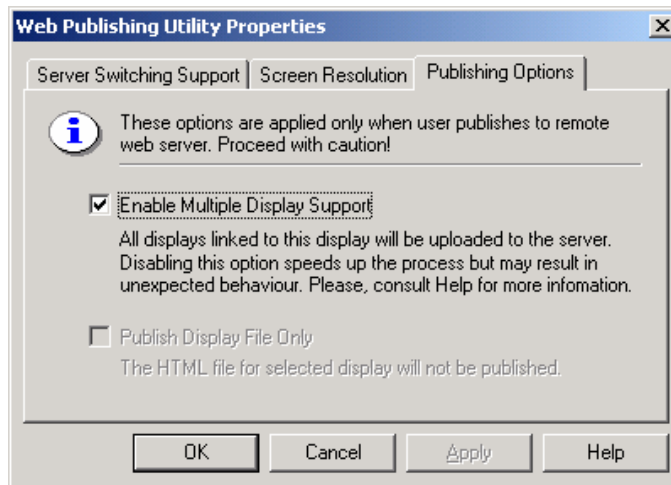


### Screen Resolution Settings

## Publishing Options

The **Publishing Options** tab of the **Web Publishing Properties** dialog box, shown in the figure below, enhances the publishing process. By default, the Web Publishing Wizard provides support for related files detection (for more details, see the **Multiple Display Support** section). The multiple display detection could be a rather lengthy process. You can speed up the process by disabling the **Enable Multiple Display Support** option. This is especially useful, if you have already published your project files to the Web server, and now you want to update display you have changed.

The multiple display detection mechanism ensures that the Web page will be published properly for the source file. Disabling the **Multiple Display Support** may cause publishing of an incomplete web page, which may result in unexpected behavior. Therefore, it is suggested to disallow publishing of the Web page. You can do so by enabling the **Publish Display File Only** option.



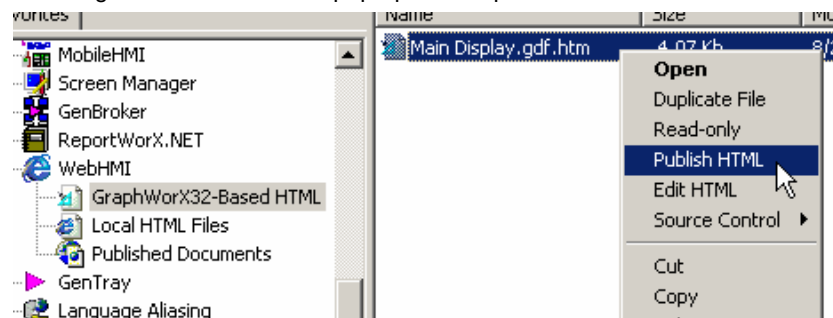
**Publishing Options**

## Publishing Files at a Later Time

The Web Publishing Wizard, ProjectWorX saves the generated HTML file to the (local) **Applications/WebHMI/GraphWorX-Based HTML** tree. The advantage of storing a local copy of an exported HTML file is that it can be edited, packed, moved, unpacked, and then published again at any time. This saves you the burden of having to re-export the same GraphWorX display file to a new HTML file. You can use this option in any of the following ways:

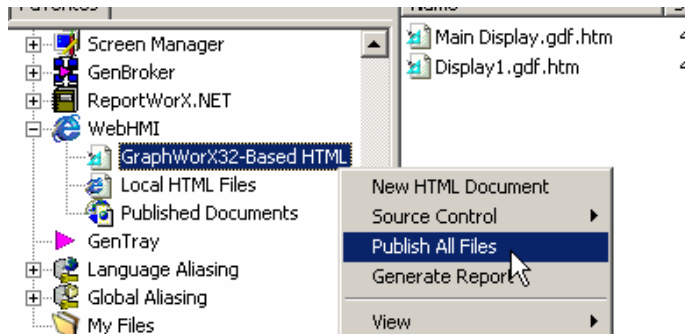
- Right-click on any HTML file in the **Applications/WebHMI/GraphWorX-Based HTML** tree and select **Publish HTML** from the pop-up menu, as shown in the figure below.
- Right-click on any HTML file in the **Applications/WebHMI/Local HTML Files** tree and select **Publish HTML** from the pop-up menu.

**Note:** Selecting **Edit HTML** from the pop-up menu opens the source code for the HTML file.



**Publishing a Locally Stored HTML File**

- Right-click on the **GraphWorX-Based HTML Files** tree and select **Publish All Files** from the pop-up menu, as shown in the figure below.
- Right-click on the **Local HTML Files** tree and select **Publish All Files** from the pop-up menu.
- Right-click on the **WebHMI** tree and select **Publish All Files** from the pop-up menu. This publishes all HTML files in the WebHMI tree.



**Publishing All Locally Stored HTML Files**

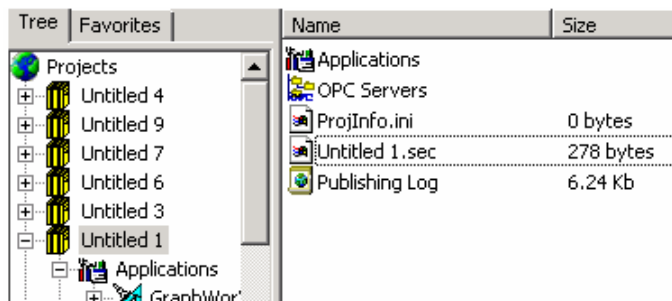
All of these actions open the **Publish HTML File to Web Site** dialog box, as shown in the figure below. The **Qualified WWW Folder** field in this dialog is identical to the **Publish Location** field in the Web Publishing Wizard dialog and is stored in the same place in the registry if the action is successful. This specifies the location of the Web server to which the HTML file will be published. If the export/publish action is successful, a "publish" action on an HTML file in the **Local HTML Files** tree simply uploads the HTML file to the Web server. A "publish" action on an HTML file in the **GraphWorX-Based HTML Files** tree uploads both the HTML file and its attached GraphWorX display (.gdf) file to the Web server.



**Specifying a Web Server Location for HTML Publishing**

**Web Publishing Log**

When exporting/publishing only one file from a GraphWorX display to HTML, you are alerted if anything goes wrong in the process. If, however, multiple files are being exported/published simultaneously, a log is generated so the operation will not be halted with each file that cannot be exported/published. After a batch publishing operation from the **GraphWorX-Based HTML Files** tree, a log file appears showing the success or failure of each attempt to publish the files. If this log file is needed at a later time, it can be found in the project root, as shown in the figure below.



**Location of Web Publishing Log File**