



Figura 2.1 – Gabinete VideoMon Mobile e aplicação em ambulância.

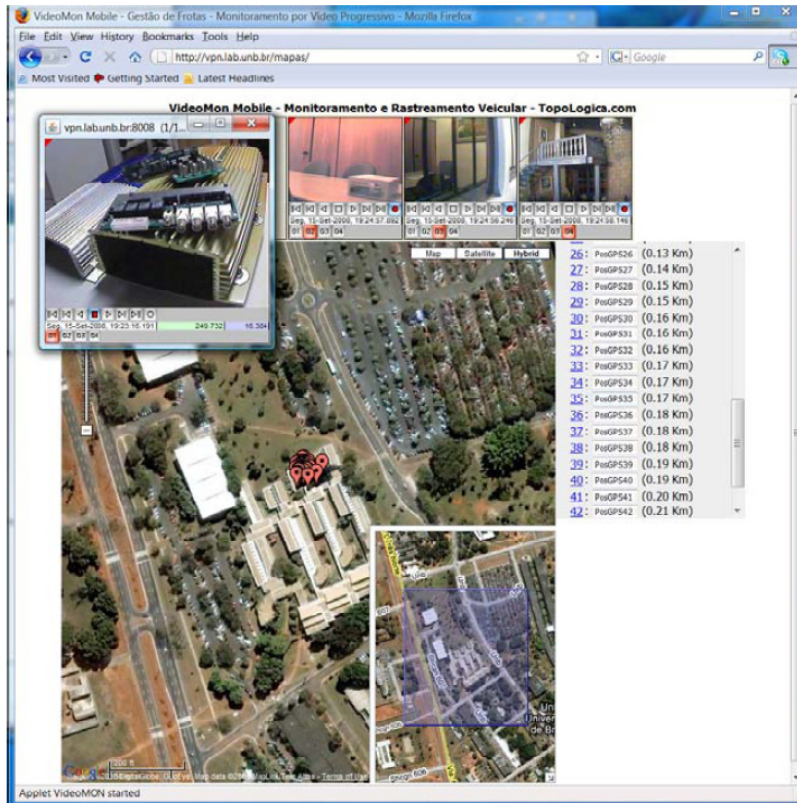


Figura 2.2 – Cliente VideoMon Mobile e detalhes placas e gabinetes desenvolvidos até o momento (<http://vpn.lab.unb.br/mapas>).



Figura 2.3 – Cliente VideoMon Mobile na ambulância.

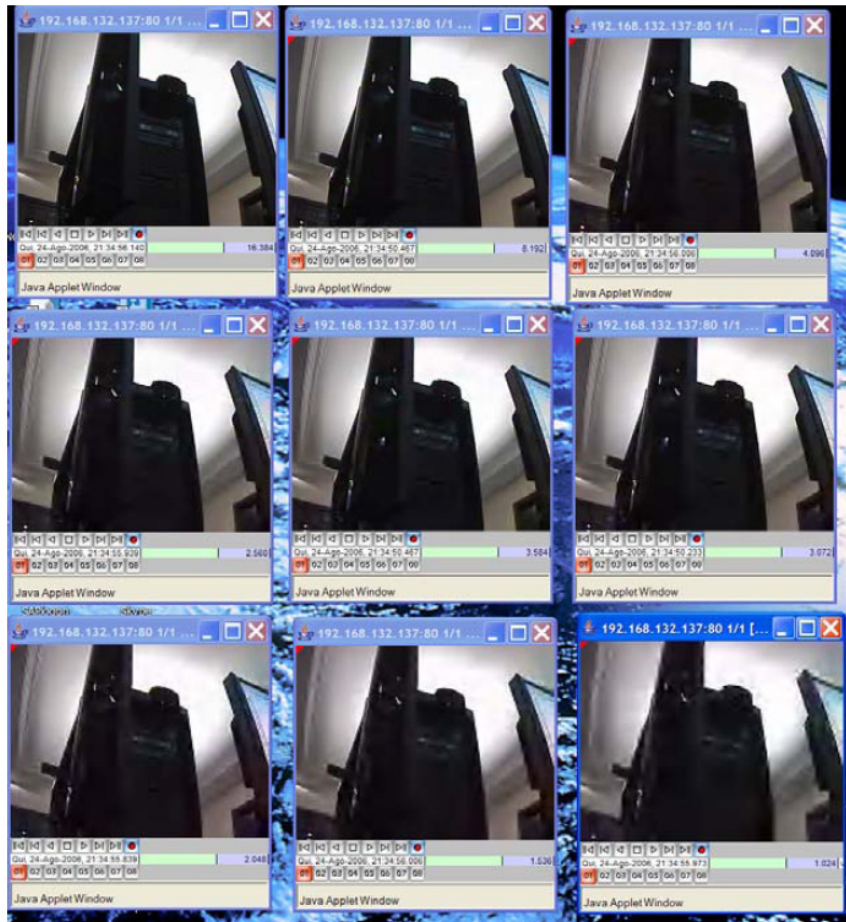


Figura 2.4 – Video Progressivo variando de 16Kbs até 1kbs (de cima para baixo).

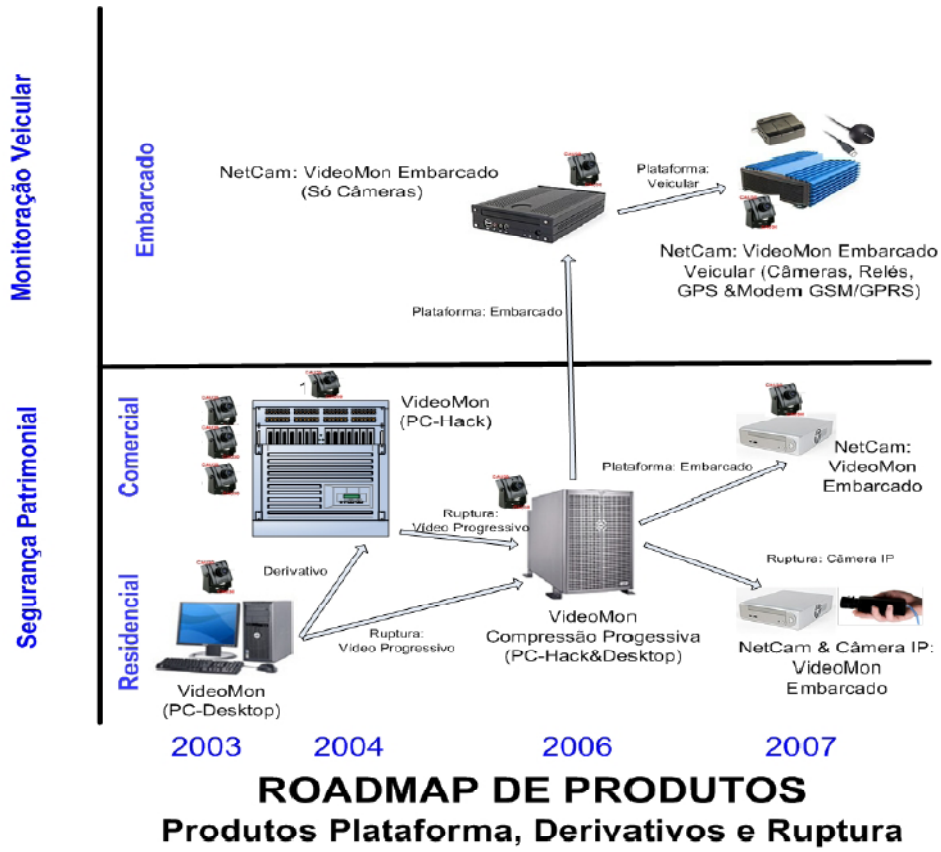


Figura 2.5 – RoadMap Produtos Topologica – VideoMon.



NetCAM - v1.0 - Microsoft Internet Explorer

Arquivo Editar Exibir Favoritos Ferramentas Ajuda

Endereço: <http://164.41.21.60/>

Google Search 125 blocked Check AutoLink

Câmeras da FT

Applet NetCAM started

164.41.21.60:80/2/2 [16...]

Jardim FT

Ter, 15-Ago-2006, 19:24:45.63 Cam 3/08

164.41.21.60:80/5/16 [164.41.21.60]

Entrada Redes

Ter, 15-Ago-2006, 19:24:45.29 CAM 5/16

164.41.21.60:80/2/2 [16...]

Entrada Laboratorio INC

Caixa Automático FT

164.41.21.60:80/5/16 [164.41.21.60]

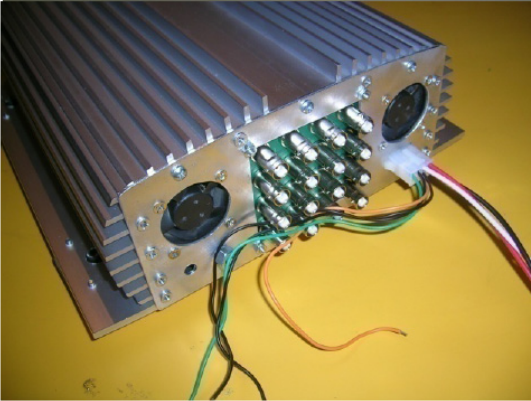
Ter, 15-Ago-2006, 19:24:45.58 Cam 5/06

164.41.21.60:80/5/16 [164.41.21.60]

Ter, 15-Ago-2006, 19:24:45.44

Iniciar

3 Skyp... alvares... Wind... Cont... Inter... HSDN Links Endereço PT 19:23



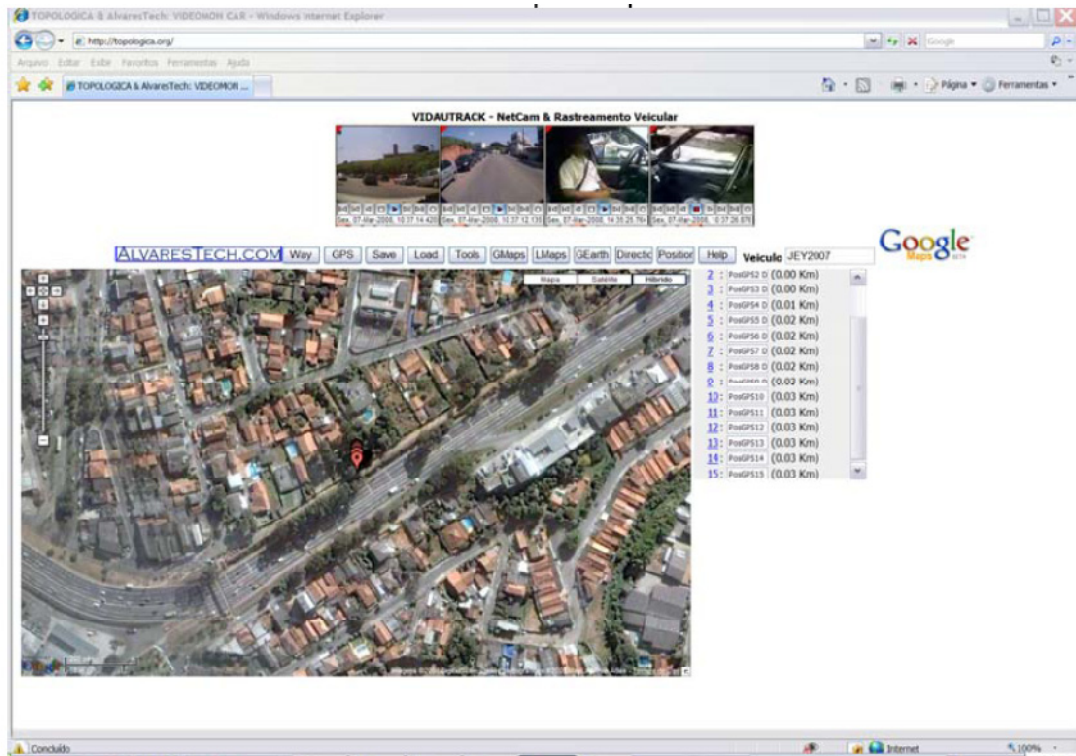


Figura 4.3 – VideoMon Mobile (Cliente): Teste em São Paulo.